

systemtronic datasheet GREEN CLOUD



General description:

The design of this plant pots evokes lamps emitting vegetation.

Designer: Mermelada Estudio.

Year of launch: 2012.

Technical description:

It includes a saucer.

Material:

Container: Aluminum.
Column: Extruded aluminum.
Base: Steel. Zinc based paint.

Dimensions:

GREEN LIGHT_L: Ø515x1500 mm Ø20.28"x59.06"
GREEN LIGHT_M: Ø440x1140 mm Ø17.32"x44.88"
GREEN LIGHT_S: Ø380x667 mm Ø14.96"x26.26"

Dimensions:

GREEN CLOUD_L: Ø515x784 mm Ø20.28"x30.87"
GREEN CLOUD_M: Ø440x704 mm Ø17.32"x27.72"
GREEN CLOUD_S: Ø380x634 mm Ø14.96"x24.96"

Dimensions:

GREEN CLOUD PEG_L: Ø515x1705 mm Ø20.28"x67.13"
GREEN CLOUD PEG_M: Ø440x1345 mm Ø17.32"x52.95"
GREEN CLOUD PEG_S: Ø380x872 mm Ø14.96"x34.33"

systemtronic _ Green Cloud
www.st-systemtronic.com
nacional@st-systemtronic.com · export@st-systemtronic.com
tel. 96-1852784 · fax.34-961854482

ASSOCIATED N°00320

AIDIMME
INSTITUTO TECNOLÓGICO

METALMECÁNICO, MUEBLE, MADERA, EMBALAJE Y AFINES

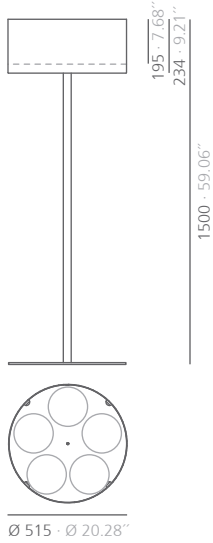


Calidad Controlada



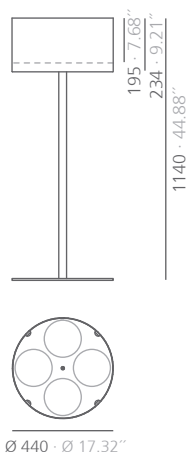
For the right use of Green cloud inner plastic plant pots must be included.

GREEN LIGHT_L



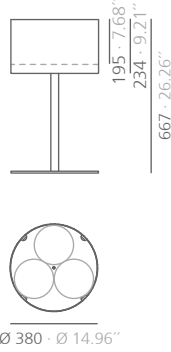
Don't add the soil directly to the Green Cloud.
Must be included: 1 saucer & 5 flower pots of 2,8 litres
Ø 170_h 180
Ø 6.69" _ h 7.09"

GREEN LIGHT_M



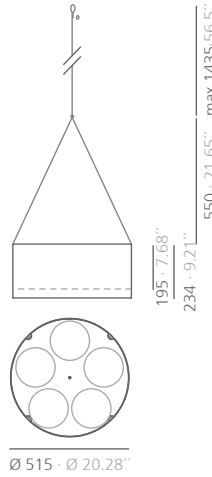
Don't add the soil directly to the Green Cloud.
Must be included: 1 saucer & 4 flower pots of 2,8 litres
Ø 170_h 180
Ø 6.69" _ h 7.09"

GREEN LIGHT_S



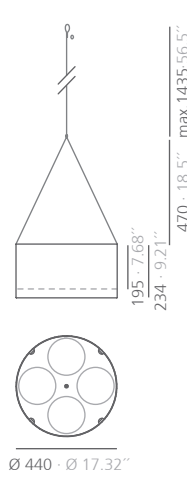
Don't add the soil directly to the Green Cloud.
Must be included: 1 saucer & 3 flower pots of 2,8 litres
Ø 170_h 180
Ø 6.69" _ h 7.09"

GREEN CLOUD_L



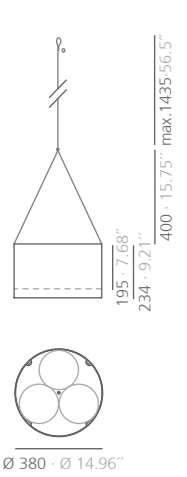
Don't add the soil directly to the Green Cloud.
Must be included: 1 saucer & 5 flower pots of 2,8 litres
Ø 170_h 180
Ø 6.69" _ h 7.09"

GREEN CLOUD_M



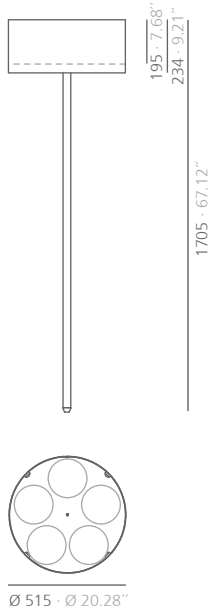
Don't add the soil directly to the Green Cloud.
Must be included: 1 saucer & 4 flower pots of 2,8 litres
Ø 170_h 180
Ø 6.69" _ h 7.09"

GREEN CLOUD_S



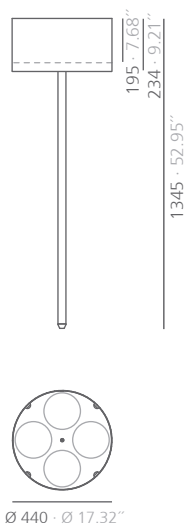
Don't add the soil directly to the Green Cloud.
Must be included: 1 saucer & 3 flower pots of 2,8 litres
Ø 170_h 180
Ø 6.69" _ h 7.09"

GREEN CLOUD PEG_L



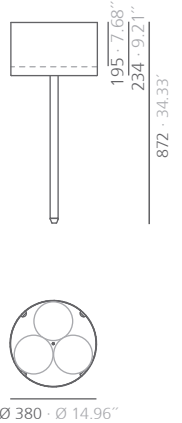
Don't add the soil directly to the Green Cloud.
Must be included: 1 saucer & 5 flower pots of 2,8 litres
Ø 170_h 180
Ø 6.69" _ h 7.09"

GREEN CLOUD PEG_M



Don't add the soil directly to the Green Cloud.
Must be included: 1 saucer & 4 flower pots of 2,8 litres
Ø 170_h 180
Ø 6.69" _ h 7.09"

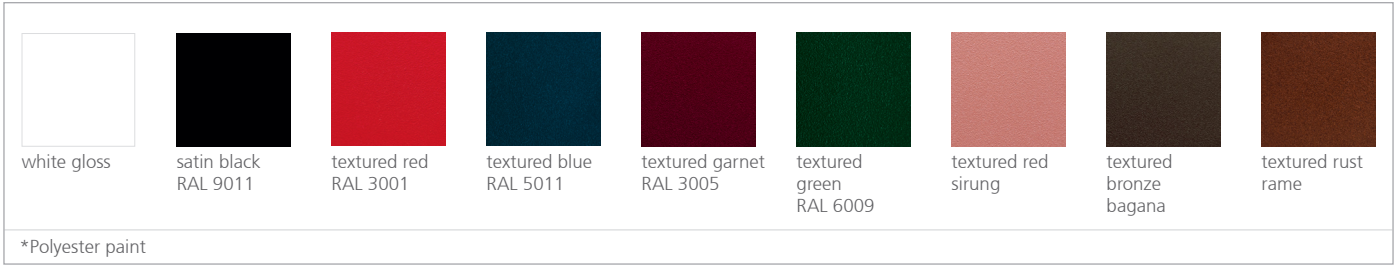
GREEN CLOUD PEG_S



Don't add the soil directly to the Green Cloud.
Must be included: 1 saucer & 3 flower pots of 2,8 litres
Ø 170_h 180
Ø 6.69" _ h 7.09"

mm · inches

Finishes:



Consult for special dimensions or any other modification.

Maintenance:

-Polyester Paint:

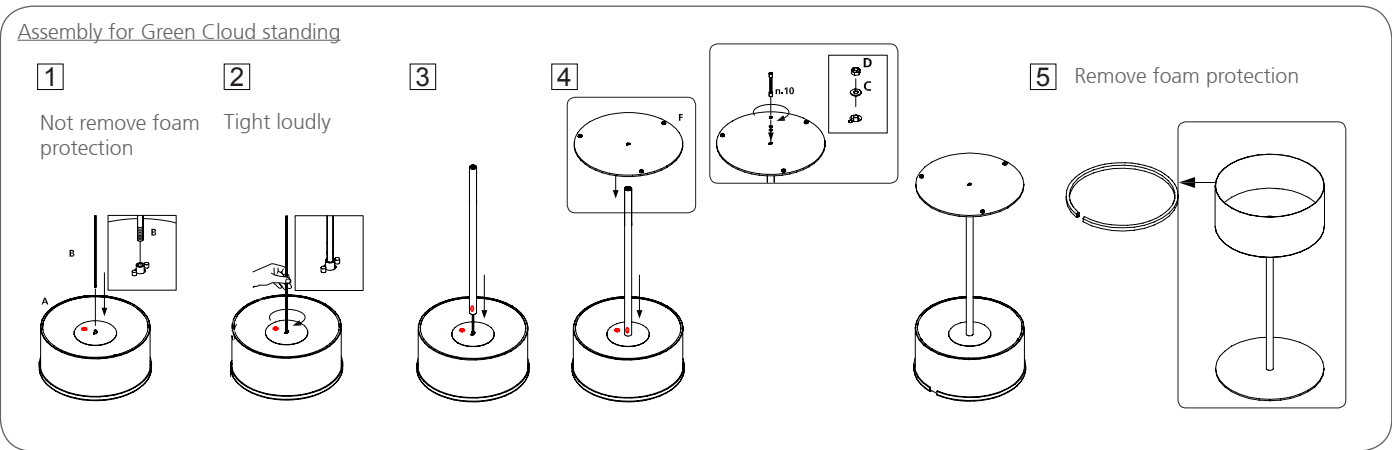
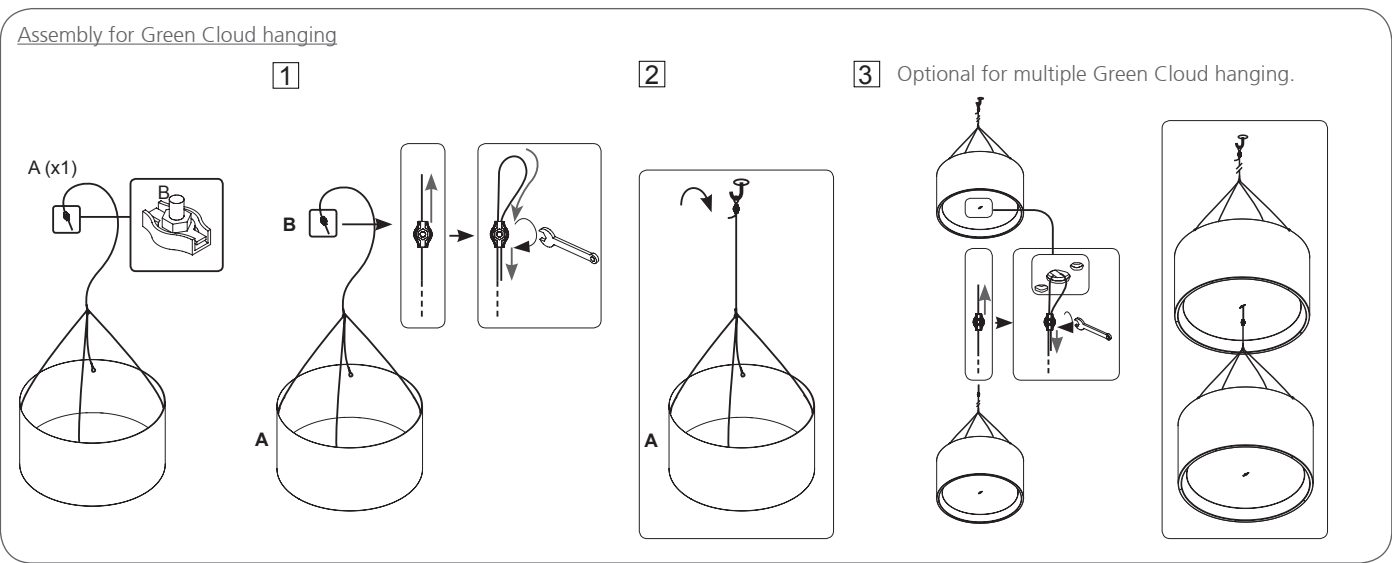
For dry dirt (dust), use a damp cloth. For greasy/oily stains (fingerprints), wipe with a sponge with water and dishwashing liquid. Rinse with a damp cloth. Avoid using products containing solvents and/or pure ethyl alcohol.

-Aluminium-metal-glass-melamine-plastic:

We recommend using normal cleaning products for delicate surfaces. Alcohol, solvents and abrasive agents must be avoided.

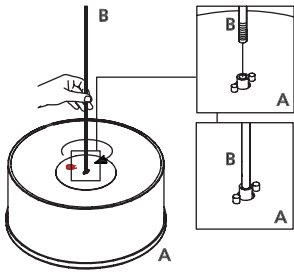
Sustainability:

Manufacturing materials are 100 % recyclable. The used paints do not contain solvents, do not consume water and do not generate emissions or waste. The result is a lower environmental impact.

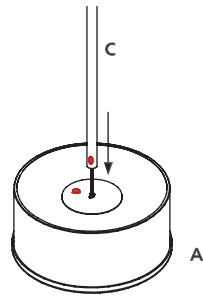


Assembly for Green Cloud Peg

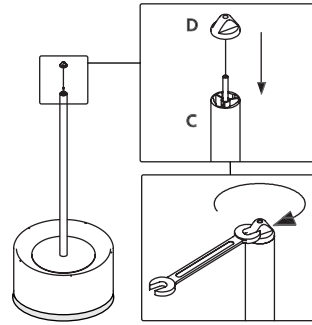
- 1 Lay on the floor on the foam protection.



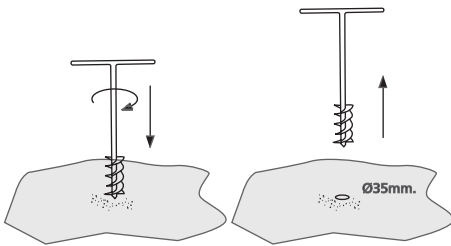
- 2 Place the column by matching the stickers.



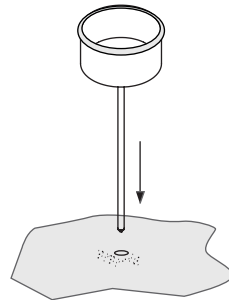
- 3 Screw and tighten the end piece of the plant pot with a fixed wrench.



- 4 Make a hole in the floor, recommended $\varnothing 35\text{mm}$ diameter. Minimum depth of 200mm depending on the type of soil.



- 5 Place the plant pot in the hole.



- 6 Remove foam protection.

