

Plumon

Side table Ø46,

by Patricia Urquiola

kettal

Side table Ø46

Designer
Patricia Urquiola

Collection
Plumon

Reference
KSA800900

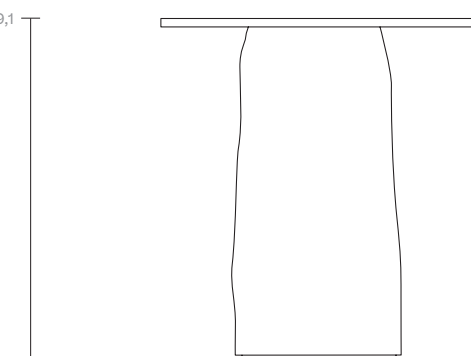
1/2

Plumon is based on the concept of clothing, on dressing and undressing furniture.

For Plumon, Urquiola designs a light structure, on which a tailored and padded dress is 'moored', wrapped. This ribbed padding, characterized by stitching, as well as being an aesthetic figure, fulfills the comfort of the product. It is the fit that guides the aesthetics. With a few simple gestures, the dress is placed on the rigid teak structure and embraces it. An extreme ease of use that becomes a real plus for an outdoor collection.

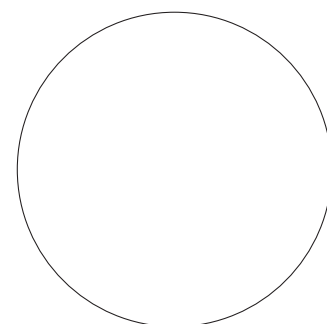
cm/inch

48,5/19,1



cm/inch

28/11



Ø46/18,1



kettal

Side table Ø46

Designer
Patricia Urquiola

Collection
Plumon

Reference
KSA800900

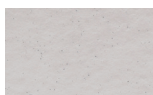
2/2

Materials

Ceramic

Leg / Top Color Options

Glaze Paints



Dolomite
373



Black Diamond
374



Jasper
375