

INCLASS



FINISHES BOOK

Fabrics / Leathers / Materials

We consider the colours and materials as means to express ideas and create emotions as they have the capacity to influence our feelings, perceptions and wellness.

This sample book wants to serve as a tool to inspire, communicate and reproduce colours, helping the end user to make their colour ideas come true based on our suggestions.

COLOURS CAN DEFINE
OUR WORLD AND
CONNECT US WITH THE
ENVIRONMENT.

COLOURS & FINISHES

ESSENTIAL ELEMENTS
TO EXPRESS A MESSAGE
AND CREATE AN
ENVIRONMENT.

The extense INCLASS finishes book offers a broad range of materials, finishes and colours.

The infinite combinations of materials, colours and textures allow to effectively express the message, the intention and the desired atmosphere for each project.



INCLASS

INDEX

1. SUGGESTIONS OF COMBINATIONS 787

2. FINISHES 809

Upholstery
Metal Paint
Wood
Polypropylene
Rotomolded polyethylene
Table tops

3. CARE AND MAINTENANCE 920

788/789

SUGGESTIONS OF COMBINATIONS

URBAN, SIENA, NATURAL, EARTH, CASUAL

INCLASS



URBAN

Elegant, modern, relaxed
or dynamic atmosphere.
Positive attitude, feeling of
calm and security.

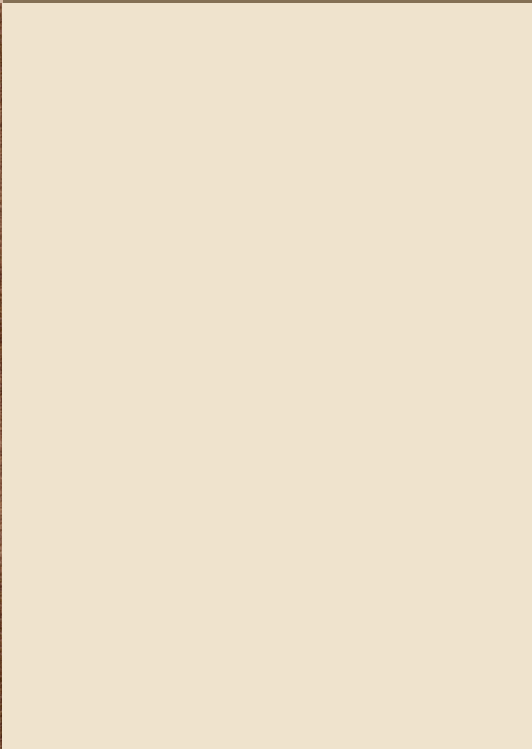
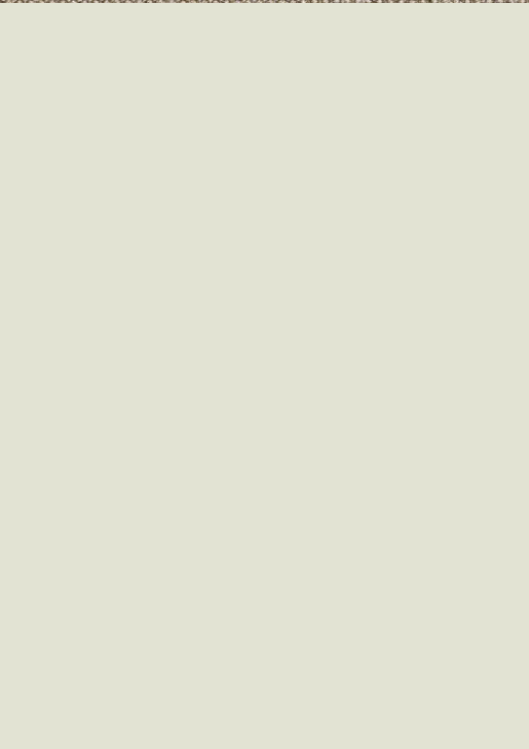
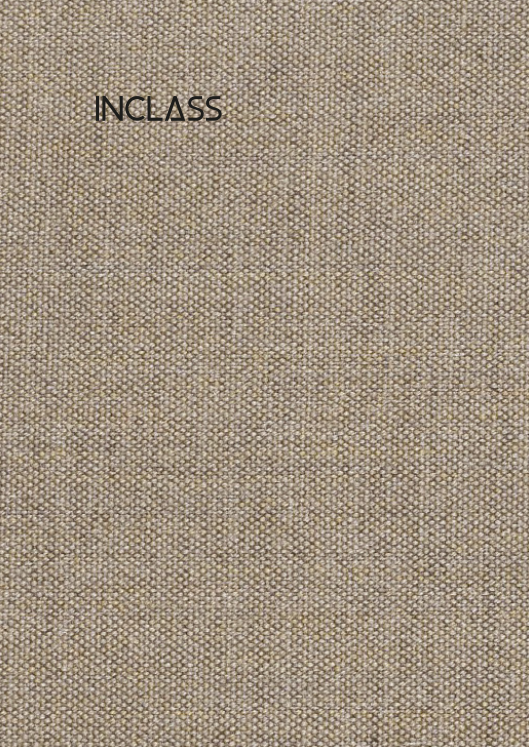
INCLASS



793/793



INCLASS



SIENA

Raw, velvety and intense tones that embellish and fill the space with subtle elegance.

INCLASS



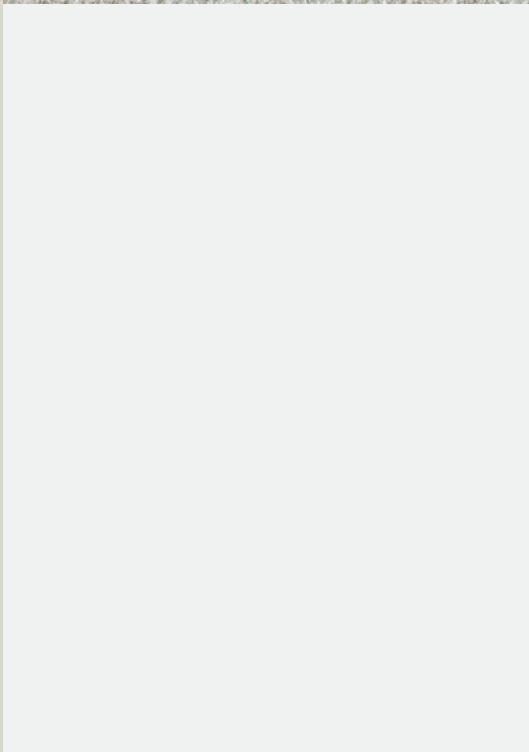
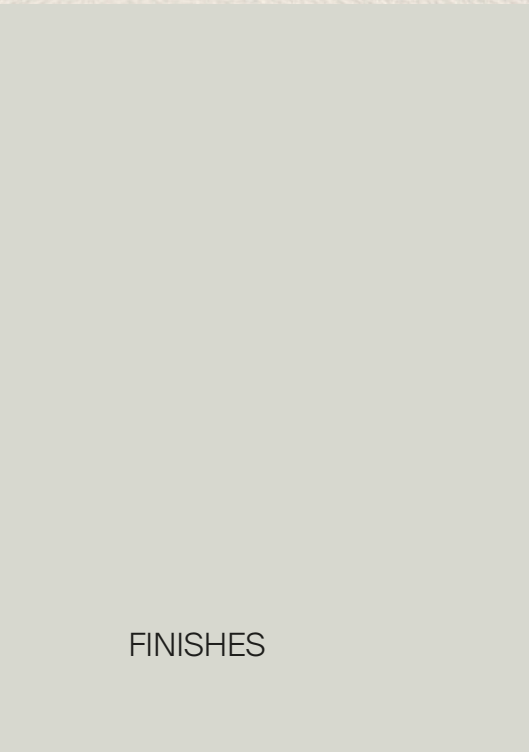
796/797



NATURAL

Refined, natural and ecological with a slightly warm nuance that transmits peace and tranquility.

798/799



INCLASS



800/801

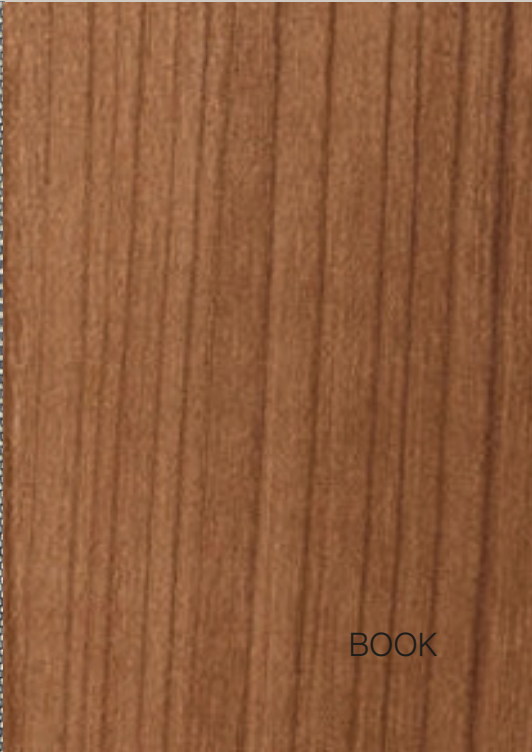
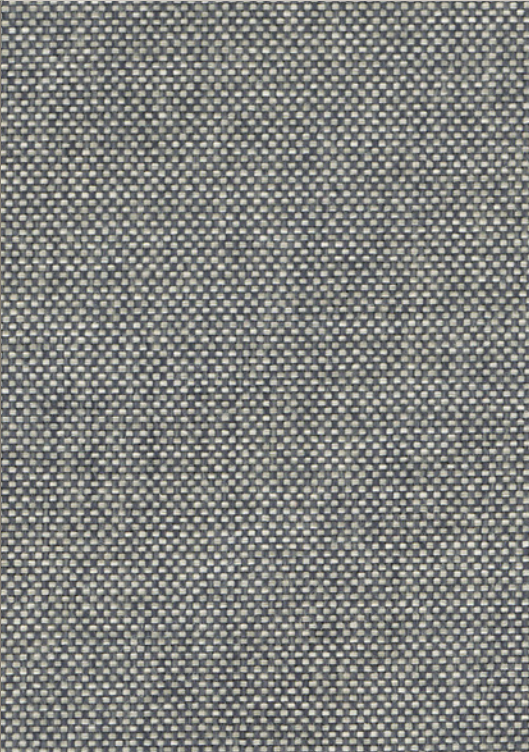
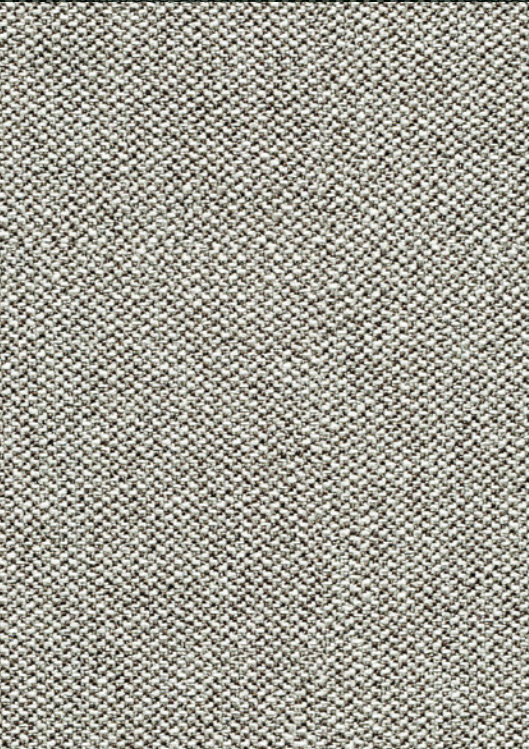


FINISHES

BOOK

EARTH

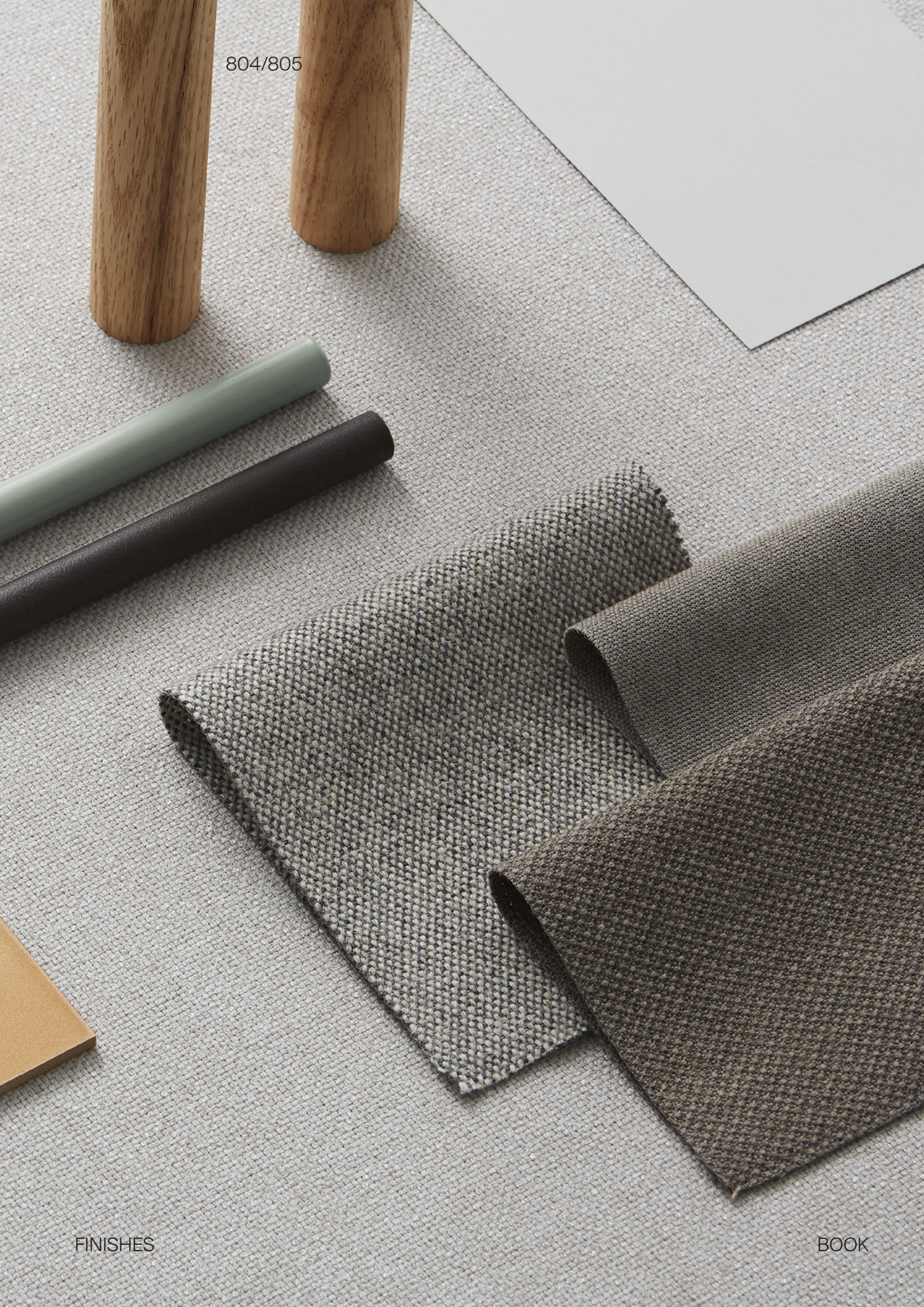
Connection with nature,
holistic and harmonious
lifestyle. Sober, cosy and
timeless colours.



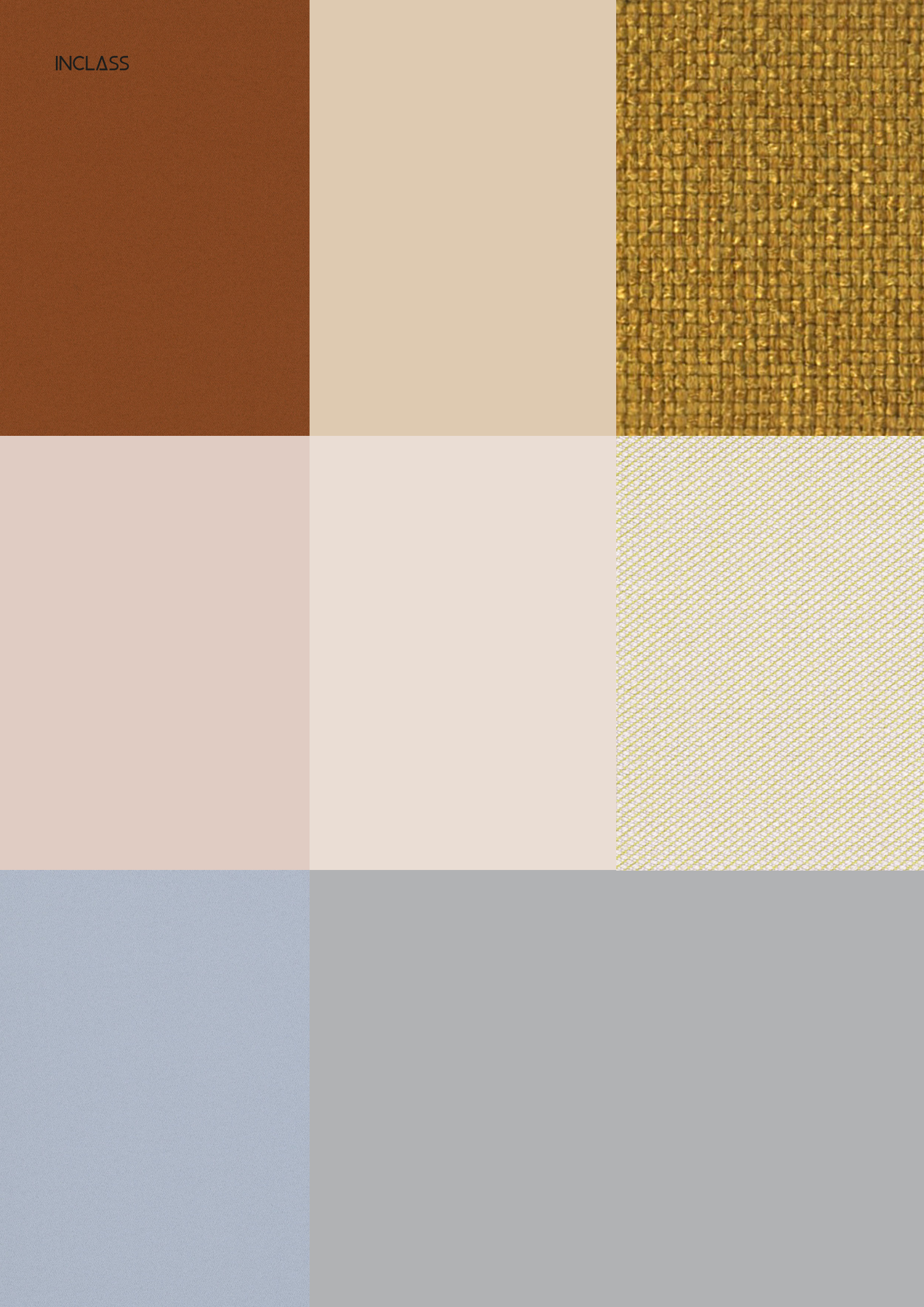
INCLASS



804/805



INCLASS



CASUAL

Quiet, relaxed environments
away from noise and
excessive pretensions.

INCLASS



808/809



FINISHES

BOOK

2.

FINISHES

2.1. UPHOLSTERY MATERIALS 812

Matrix by collections	818
G1 - Asis	820
G2 - Jordan	822
G2 - Nel	824
G2 - Ars	826
G2 - Pixel	828
G2 - Cora	830
G2 - Hilton	832
G2 - Addo	834
G3 - Apta	836
G3 - Cura	838
G3 - Iber	840
G3 - Calma	842
G3 - Rivet	844
G3 - Era	846
G3 - Medley	848
G4 - Main Line Flax	850
G4 - Connect	852
G4 - Valencia	854
G4 - Step	856
G5 - Dolce	858
G5 - Synergy	860
G5 - Remix	862
G5 - Canvas	864
G6 - Steelcut Trio	866
G6 - Fiord	868
G7 - Hallingdal	870
G10 - Piel	872
G11 - Piel	874
Velvet mesh	876
Netex	878
Maxi	880

2.2. METAL PAINT & FINISHES 882

Matrix by collections	884
Sample card	886

2.3. WOOD 888

Matrix by collections	890
Veneer / Solid wood	892
Lacquered colours	894

2.4. POLYPROPYLENE 896

Matrix by collections	898
PP1 colours for monoshells	900
PP1 colours for bases	902

2.5. ROTOMOLDED POLYETHYLENE 904

Polyethylene colours	906
Lacquered polyethylene colours	908

2.6. TABLE TOPS 910

Matrix by collections	912
Wood veneer tops	914
Lacquered tops	916
Miscellaneous materials	918

INCLASS

UPHOLSTERY FABRICS & LEATHERS

All our upholstered products are locally handcrafted, making each piece unique.

The fabrics and leathers are priced by grades identified by an alpha numerical code: G1/G2/G3/G4/G5/G6/G7/G10/G11/G12

Upon approval, INCLASS products can be upholstered in customer's own fabrics (COM) or in customer's own leathers COL. Not all customer's materials are valid to upholster our products. They must be validated and approved by the INCLASS upholstery department.

- COM textiles will be priced as Grade 2.
- COL leathers will be priced as Grade 3.

All our fabrics and leathers may be purchased separately upon request. Consult our Customer Service for pricing.

The fabrics with stripes or patterns will be applied vertically unless customer specifies other way.

To guarantee a good finish, in some models, a backing must be added to some of the fabrics.

INCLASS offers a broad and selected range of upholsteries produced by top-level companies.

The maintenance, cleaning recommendations and technical data are the ones supplied by the producer for each collection.

Leather is a natural raw material with a non-uniform surface. The leather may show marks such as grain, wrinkles, veins and differences in colour or tone from one batch to another.

The samples in the finishes book are not to be considered a guarantee of perfect homogeneity between the sample and the real supply.

Items upholstered in light colours, especially white, make stains more visible and in many cases such as the dyes of garments impossible to remove. INCLASS shall not accept any liability for these kinds of stains.



UPHOLSTERY FABRICS & LEATHERS

COM/COL service

The Customer's Own Material (COM) and Customer's Own Leather (COL) services offers the opportunity for customers to have an INCLASS bespoke product with textiles or leathers especially selected by the customer.

Prior to order placement, if the COM/COL is not found in the INCLASS database of approved fabrics and leathers, a sample cutting of the required COM/COL must be submitted for approval.

If COM has stripes or patterns, the sample should be large enough to show the entire design of the fabric. Customer must identify the name and number of units on which the COM/ COL is to be applied.

Once approved, you can place your order. As soon as we receive and check COM/COL in our factory, our customer service will inform you about the production and delivery schedule.

Even after preliminary approval, INCLASS reserves the right to reject COM/COL if necessary when the quality is not satisfactory for the item it is intended to be used on. Even after preliminary approval, INCLASS assumes no responsibility for its overall appearance, durability or any other quality aspect, after being upholstered on our products. Subject to a specific agreements, INCLASS may buy for the customer the COM/COL materials.

COM/COL requirements

Each COM/COL must be identified as follows to prevent order delays or material losses:

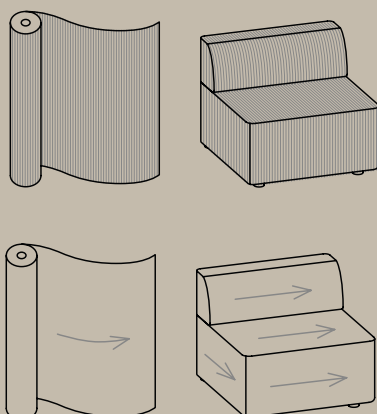
- Customer name and purchase order number.
- Clearly indicate the item to which COM/COL is to be applied
- The name of the fabric supplier. Supplier's fabric name with number and colour.

The COM requirements are based on 1,4 meter width plain material. In some models, the quantity of material needed can be optimized by increasing the units ordered. For this reason, our product sheets indicate the quantities required for orders from 1 to 7 units and for orders of more than 8 units. If you need a more accurate calculation, contact our Customer Service. If the fabric has a design that requires specific positioning or pattern matching, our Customer Service should be consulted for additional material requirement. On these type of fabrics an upcharge will be applied.

COL hides must be sent well packed and rolled in a neat manner avoiding creases and roll marks. The leathers can be rejected if are sent in a folded manner.

To determine COL quantity, see COL requirements for each product. Leather is a natural product with a non-uniform surface due to grain, wrinkles, veins and may present differences in tone from one batch to another. For this reason all square meter requirements are estimations. (COL) Square meter requirements are based on hides with an average size of 4-5 m² of clean usable leather. If the COL has a smaller average hide size, please consult our Customer Service. The usable surface and the shape of the COL hides supplied can make it necessary for us to request more leather after COL is received.

Excess COM/COL will not be returned with the shipment of furniture and will be disposed of after order is completed unless prior arrangements have been made with our Customer Service.



Cutting Direction Guidelines

Cutting direction is based on the fabric width and the way the fabric is cut from the roll and applied to products. The INCLASS Upholstered products usually use the vertical direction. The vertical direction is understood as the direction of the unrolling, leaving the selvages on the right and left sides. The fabric is applied as shown in the illustration.

LEGEND

- Not available
- Available
- See specifications

ESCALAS	ESITT	ITEK PRO	KORI	LAPSE	LEA	LIN TAPIZ	LIN WOOD	MARCUS	NIIM	PAU	PLANIA BENCH	REVER	SUN	TAIA	TAO	TETRIS 2.0	UNNIA	UNNIA TAPIZ	VARYA	VARYA TAPIZ	VARYA WOOD	VARYA XL	WUDI	XAIL
●	●	●	●	●	●	●	●	-	●	●	●	●	●	●	●	●	●	●	●	●	●	●	●	●
●	●	●	●	●	●	●	●	●	●	●	●	●	●	●	●	●	●	●	●	●	●	●	●	●
●	●	●	●	●	●	●	●	●	●	●	●	●	●	●	●	●	●	●	●	●	●	●	●	●
●	●	●	●	●	●	●	●	●	●	●	●	●	●	●	●	●	●	●	●	●	●	●	●	●
●	●	●	●	●	●	●	●	●	●	●	●	●	●	●	●	●	●	●	●	●	●	●	●	●
●	●	●	●	●	●	●	●	●	●	●	●	●	●	●	●	●	●	●	●	●	●	●	●	●
●	●	●	●	●	●	●	●	●	●	●	●	●	●	●	●	●	●	●	●	●	●	●	●	●
●	●	●	●	●	●	●	●	●	●	●	●	●	●	●	●	●	●	●	●	●	●	●	●	●
●	●	●	●	●	●	●	●	●	●	●	●	●	●	●	●	●	●	●	●	●	●	●	●	●
●	●	●	●	●	●	●	●	●	●	●	●	●	●	●	●	●	●	●	●	●	●	●	●	●
●	●	●	●	●	●	●	●	●	●	●	●	●	●	●	●	●	●	●	●	●	●	●	●	●
●	●	●	●	●	●	●	●	●	●	●	●	●	●	●	●	●	●	●	●	●	●	●	●	●
●	●	●	●	●	●	●	●	●	●	●	●	●	●	●	●	●	●	●	●	●	●	●	●	●
●	●	●	●	●	●	●	●	●	●	●	●	●	●	●	●	●	●	●	●	●	●	●	●	●
●	●	●	●	●	●	●	●	●	●	●	●	●	●	●	●	●	●	●	●	●	●	●	●	●
●	●	●	●	●	●	●	●	●	●	●	●	●	●	●	●	●	●	●	●	●	●	●	●	●
●	●	●	●	●	●	●	●	●	●	●	●	●	●	●	●	●	●	●	●	●	●	●	●	●
●	●	●	●	●	●	●	●	●	●	●	●	●	●	●	●	●	●	●	●	●	●	●	●	●
●	●	●	●	●	●	●	●	●	●	●	●	●	●	●	●	●	●	●	●	●	●	●	●	●
●	●	●	●	●	●	●	●	●	●	●	●	●	●	●	●	●	●	●	●	●	●	●	●	●
●	●	●	●	●	●	●	●	●	●	●	●	●	●	●	●	●	●	●	●	●	●	●	●	●
●	●	●	●	●	●	●	●	●	●	●	●	●	●	●	●	●	●	●	●	●	●	●	●	●
○	●	●	●	●	●	●	●	●	●	○	●	●	●	●	●	○	●	●	●	●	●	●	●	●
○	●	●	●	●	●	●	●	●	●	○	●	●	●	●	●	○	●	●	●	●	●	●	●	●
-	●	●	-	-	-	-	-	-	-	-	-	-	-	-	-	-	-	-	-	-	-	-	-	-
-	●	●	-	-	-	-	-	-	-	-	-	-	-	-	-	-	-	-	-	-	-	-	-	-
-	●	-	-	-	-	-	-	-	-	-	-	-	-	-	-	-	-	-	-	-	-	-	-	-

INCLASS

G1 - ASIS

TECHNICAL DATA

Composition:

100% polyester.

Light fastness:

5 - 6, ISO 105 B02, Method 2.

Abrasion:

100.000 Martindale EN ISO 12947-2.

Resistance to pilling:

4 - 5, ISO 12945-2.

Rubbing fastness in humid state:

4, ISO 105-X12.

Rubbing solvents:

4, ISO 105-X12.

Tear strength:

Warp 140N.

Weft 110N, EN ISO 13937-3.

Flammability:

EN 1021 - 1/2.

BS 5852 0.

BS 7176 Low Hazard.

CAL TB 117 Section 1.

NFPA 260 Class 1.

Regulation n° 118 UNECE Annexed 6.

IMO MSC.307 (88) Annexed I Part 8.

Width: 140cm

Weight: 335gr/m²

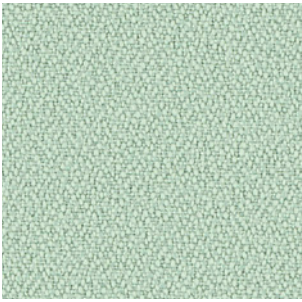


***Batch to batch variations may occur within commercial tolerances.

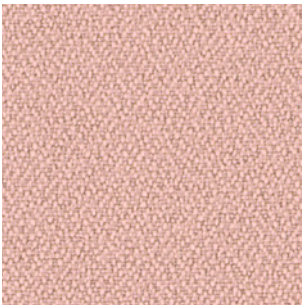
Note:

- The real colours and tones of the fabrics may differ from the digital image due to the scan process and the colour calibration of the different screens. Always request real fabric samples before ordering.

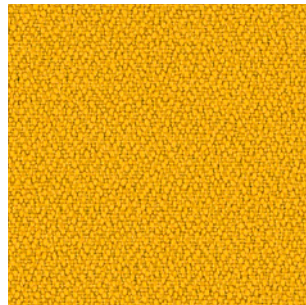
- Consult our Fabric and Leather Matrix to know about the availability of this material by product line.



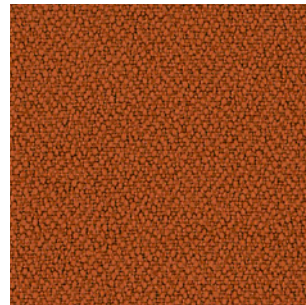
198



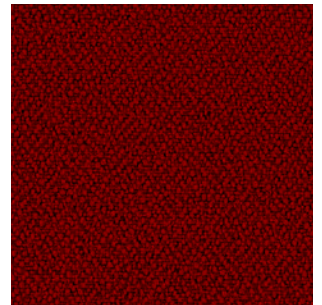
315



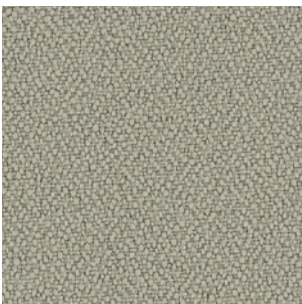
88



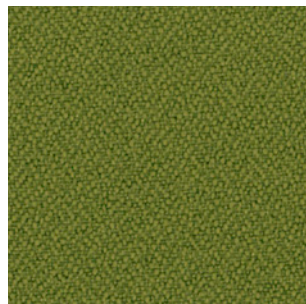
122



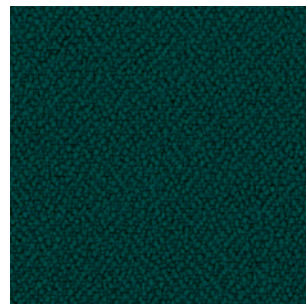
4011



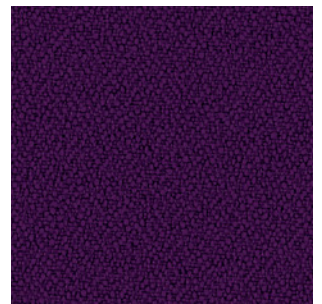
422



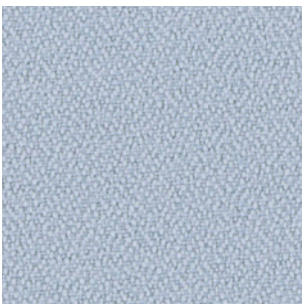
77



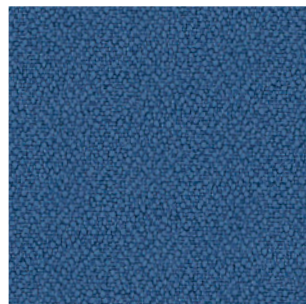
47



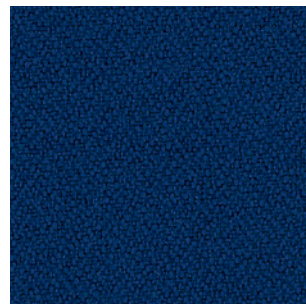
292



86



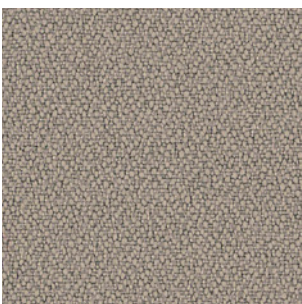
4



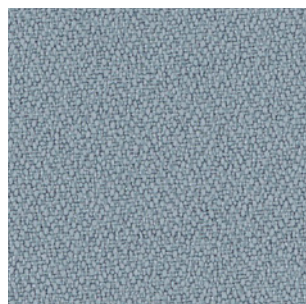
5



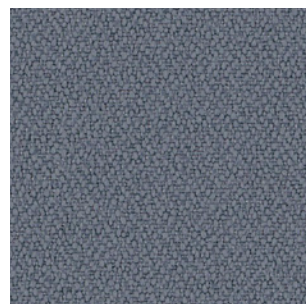
26



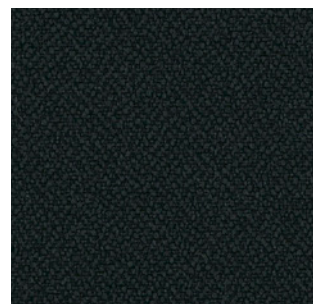
132



170



108



9

INCLASS

G2 - JORDAN

TECHNICAL DATA

Composition:

100% polyester.

Light fastness:

5, ISO 105 B02.

Abrasion:

100.000 Martindale EN ISO 12947-1, 2.

Resistance to pilling:

4 - 5, ISO 12945-2.

Fastness to rubbing:

Wet 5.

Dry 5, ISO 105-X12.

Tear strength:

Warp 180, 2N.

Weft 174, 3N, EN ISO 13937-3.

Seam slippage:

Warp 1,6N.

Weft 2,0N, EN ISO 13936-2.

Tensile strength::

Warp 1257N.

Weft 1189N, EN ISO 13934-1.

Width: ±146cm

Weight: ±360gr/m²



***Batch to batch variations may occur within commercial tolerances.

Note:

- The real colours and tones of the fabrics may differ from the digital image due to the scan process and the colour calibration of the different screens. Always request real fabric samples before ordering.

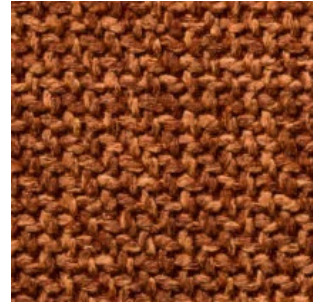
- Consult our Fabric and Leather Matrix to know about the availability of this material by product line.



1



9



8



3



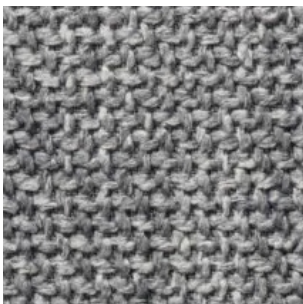
4



5



6



15



10



11



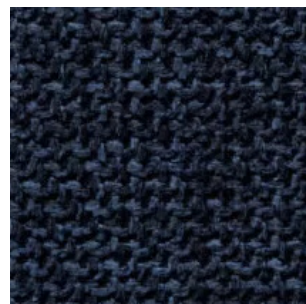
18



16



12



13



19

INCLASS

G2 - NEL

TECHNICAL DATA

Composition:

95% PES, 5% cotton.

Light fastness:

5 - 6, UNE 40187 - BS1006-B2.

Abrasion:

>38.000 Martindale EN ISO 12947-2.

Resistance to pilling:

4 - 5, ISO 12945-1.

Rubbing fastness in humid state:

4 - 5, ISO 105-D01.

Rubbing solvents:

4 - 5, ISO 105-D01.

Tear strength:

Warp 2mm.

Wet 2,1mm, EN ISO 13937-2.

Characteristics:

Instalimp® treatment.

Width: ±140cm

Weight: ±445gr/m²

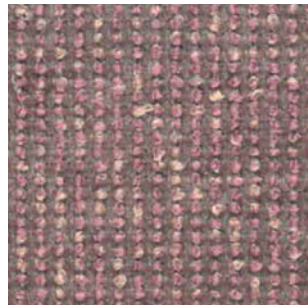


***Batch to batch variations may occur within commercial tolerances.

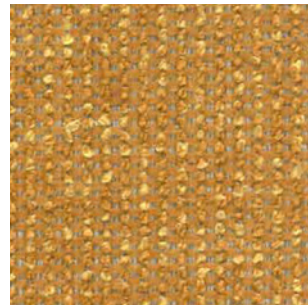


Note:

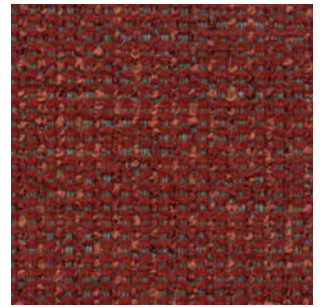
- The real colours and tones of the fabrics may differ from the digital image due to the scan process and the colour calibration of the different screens. Always request real fabric samples before ordering.
- Consult our Fabric and Leather Matrix to know about the availability of this material by product line.



21



10



12



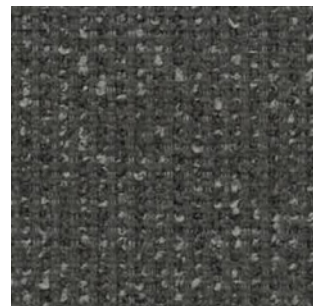
15



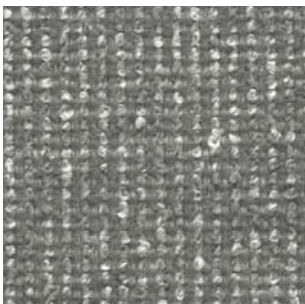
1



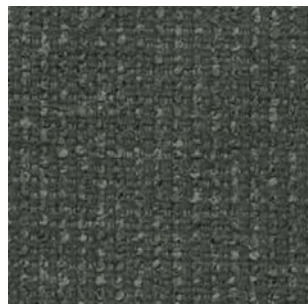
3



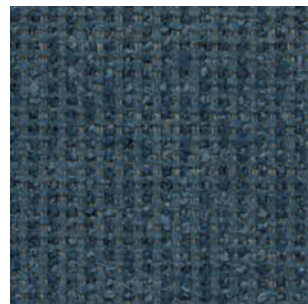
50



6



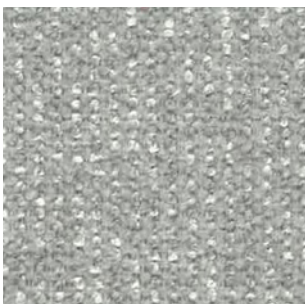
80



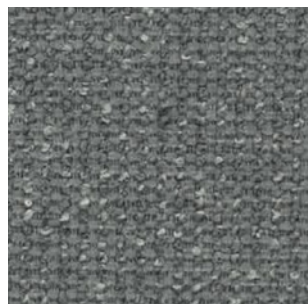
7



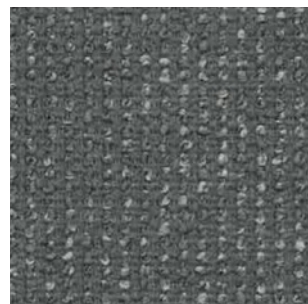
70



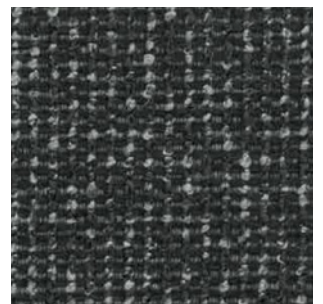
9



19



29



90

INCLASS

G2 - ARS

TECHNICAL DATA

Composition:

100% polyester.

Light fastness:

5, ISO 105 B02, Method 2.

Abrasion:

90.000 Martindale EN ISO 12947-2.

Resistance to pilling:

4 - 5, ISO 12945-2.

Rubbing fastness in humid state:

5, ISO 105-X12.

Rubbing solvents:

4 - 5, ISO 105-X12.

Seam strength:

Warp 3,7mm.

Weft 4,0mm, EN ISO 13936-2.

Seam strength:

Warp 75,6N.

Weft 65,1N, EN ISO 13937-3.

Flammability:

EN 1021 - 1 (cigarette).

Environment:

OEKO-TEX® Standard 100.

Width: 140cm

Weight: 250gr/m²



***Batch to batch variations may occur within commercial tolerances.

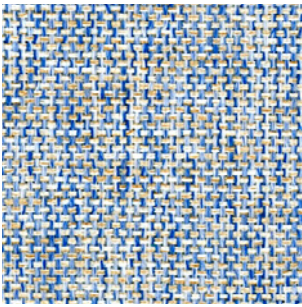


Note:

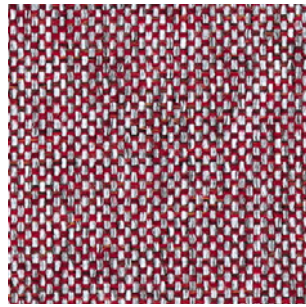
- The real colours and tones of the fabrics may differ from the digital image due to the scan process and the colour calibration of the different screens. Always request real fabric samples before ordering.
- Consult our Fabric and Leather Matrix to know about the availability of this material by product line.



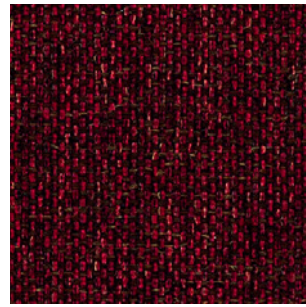
90



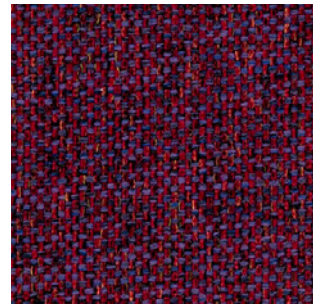
74



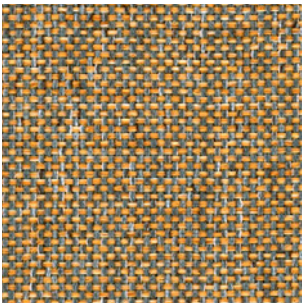
27



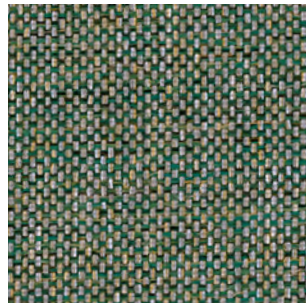
59



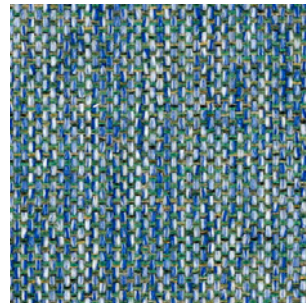
68



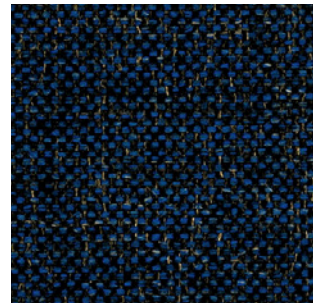
45



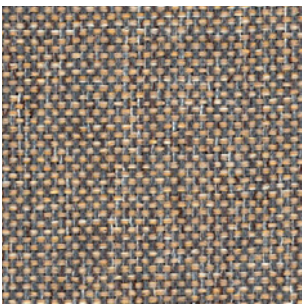
35



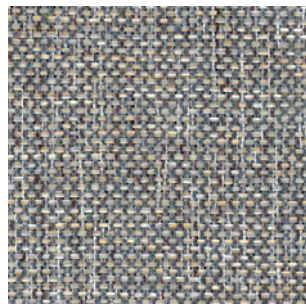
75



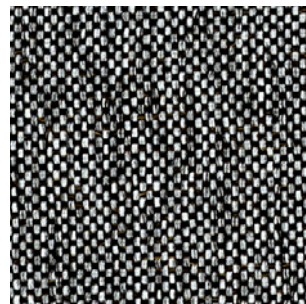
79



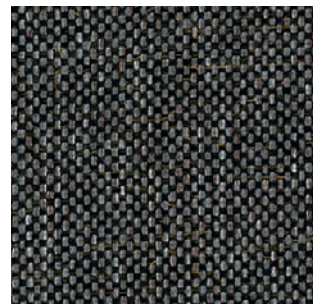
87



88



98



99

INCLASS

G2 - PIXEL

TECHNICAL DATA

Composition:

100% polyolefin.

Light fastness:

5 - 6, UNE-EN ISO 105-B02. Method 2.

Abrasion:

100.000 Martindale EN ISO 12947-2.

Resistance to pilling:

4 - 5, UNE-EN 12945-2.

Dye fastness to rubbing:

Wet 4 - 5.

Dry 4 - 5, UNE-EN ISO 105-X12.

Tear Resistance:

Warp 120N.

Weft 130N UNE-EN ISO 13937-3.

Flammability:

EN 1021-1 (cigarette)

BS 5852-0 (cigarette)

CAL TB 117 Section 1.

NFPA 260 Clase 1.

Width: 140cm

Weight: 255gr/m²

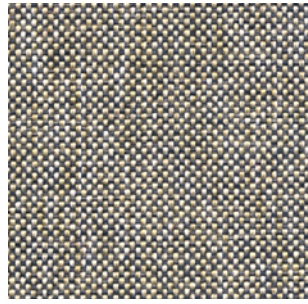


***Batch to batch variations may occur within commercial tolerances.



Note:

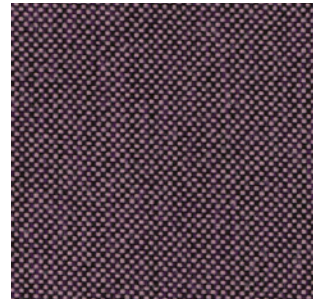
- The real colours and tones of the fabrics may differ from the digital image due to the scan process and the colour calibration of the different screens. Always request real fabric samples before ordering.
- Consult our Fabric and Leather Matrix to know about the availability of this material by product line.



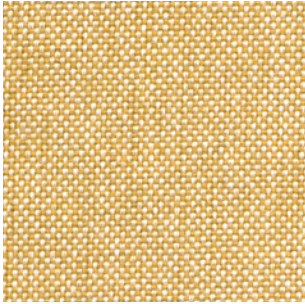
12



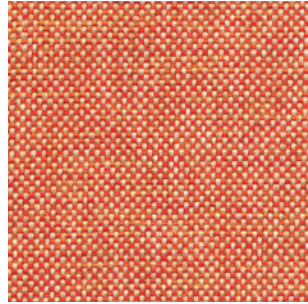
3



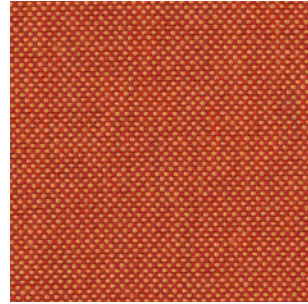
90



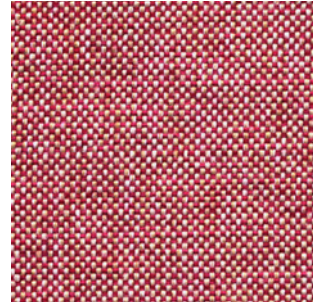
50



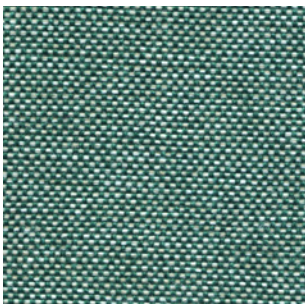
53



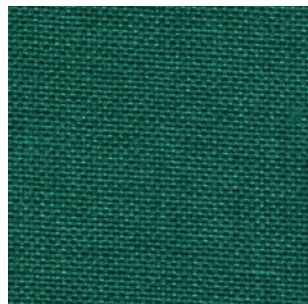
62



54



101



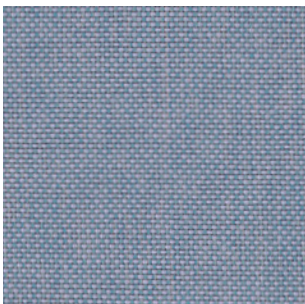
102



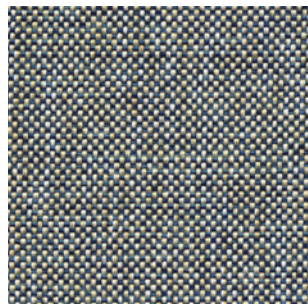
41



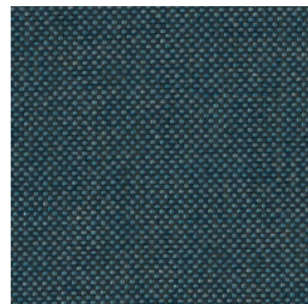
43



84



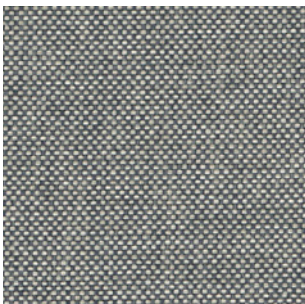
71



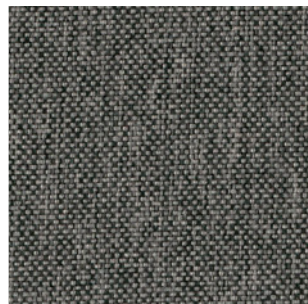
78



247



19



21



29



801

INCLASS

G2 - CORA

TECHNICAL DATA

Composition:

100% polyester.

Light fastness:

5 EN ISO 105-B02, Method 2.

Abrasion:

83.000 Martindale EN ISO 12947-1, 2.

Resistance to pilling:

4, EN ISO 12945-2.

Rubbing fastness in humid state:

5, ISO 105-X12.

Rubbing solvents:

5, ISO 105-X12.

Seam strength:

Warp 2,5mm.

Weft 3,7mm, ISO 13936-2.

Tear strength:

Warp exceed 154,2N.

Weft exceed 112,3N, EN ISO 13937-3.

Width: 140cm

Weight: 330gr/m²



***Batch to batch variations may occur within commercial tolerances.



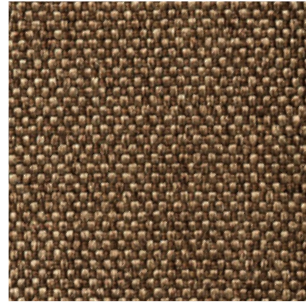
Note:

- The real colours and tones of the fabrics may differ from the digital image due to the scan process and the colour calibration of the different screens. Always request real fabric samples before ordering.

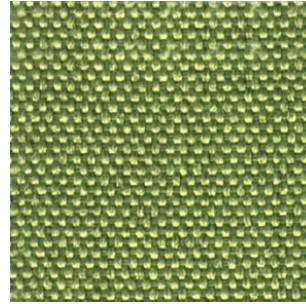
- Consult our Fabric and Leather Matrix to know about the availability of this material by product line.



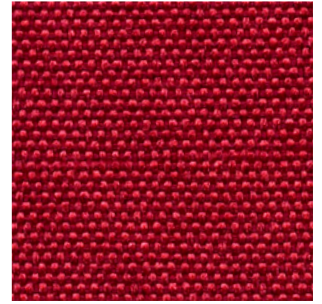
21



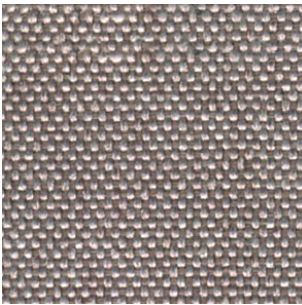
40



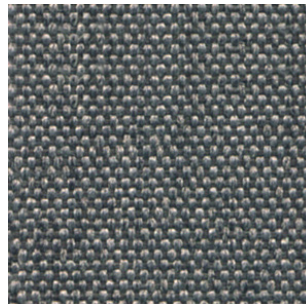
32



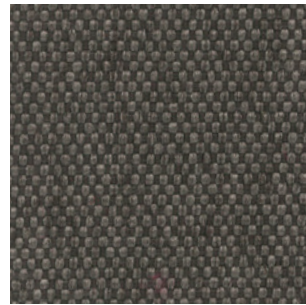
60



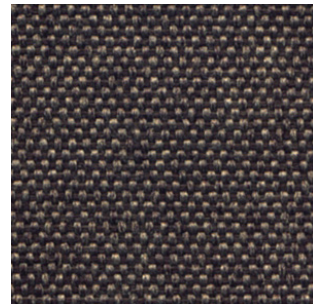
12



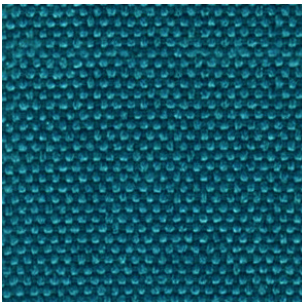
14



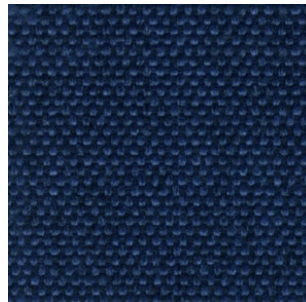
115



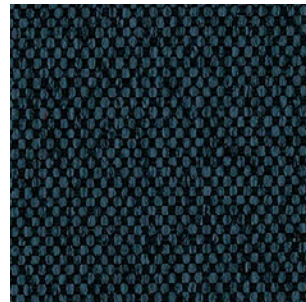
27



17



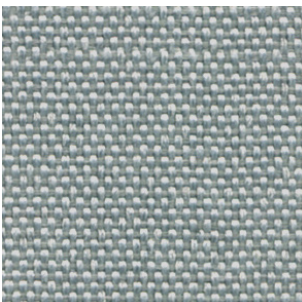
18



37



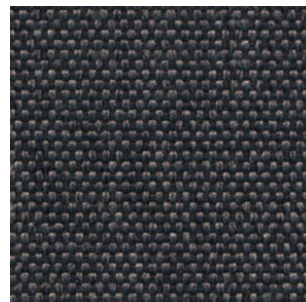
38



3



65



20



2

INCLASS

G2 - HILTON

TECHNICAL DATA

Composition:

100% polyester.

Light fastness:

4, ISO 105 B02.

Abrasion:

>25.000 Martindale ISO 12947-2.

Resistance to pilling:

4 - 5, ISO 12945-2.

Tear strength:

Warp 63N.

Weft 63N, ISO13937-3.

Dye fastness to rubbing:

Wet 4 - 5. Dry 4 - 5, ISO 105X12.

Width: 140cm

Weight: 380gr/m²



***Batch to batch variations may occur within commercial tolerances.



Note:

- The real colours and tones of the fabrics may differ from the digital image due to the scan process and the colour calibration of the different screens. Always request real fabric samples before ordering.

- Consult our Fabric and Leather Matrix to know about the availability of this material by product line.



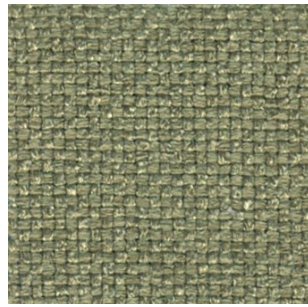
6



4



2



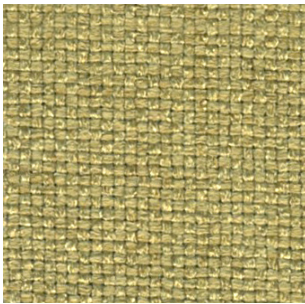
18



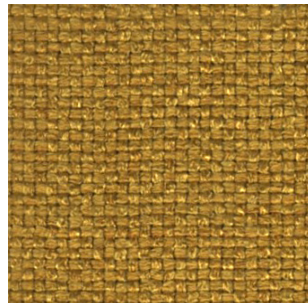
8



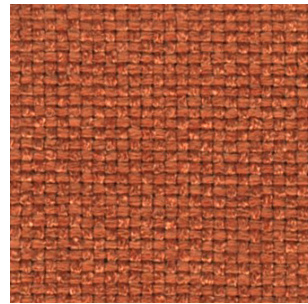
9



17



10



11



12



16



13



14



1

INCLASS

G2 - ADDO

TECHNICAL DATA

Composition:

80% polyester, 20% cotton.

Light fastness:

5, ISO 105 B02, Method 2.

Abrasion:

40.000 Martindale ISO 12947-1, 2.

Resistance to pilling:

4, ISO 12945-2.

Rubbing fastness in humid state:

3, ISO 105-X12.

Rubbing solvents:

4 - 5, ISO 105-X12.

Seam strength:

Warp 3mm.

Weft 2mm, ISO 13936-2.

Tear strength:

Warp exceed 175,1N.

Weft exceed 120,7N, EN ISO 13937-3.

Flammability:

EN 1021 - 1 (cigarette).

Width: 140cm

Weight: 365gr/m²

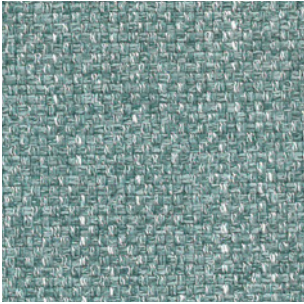


***Batch to batch variations may occur within commercial tolerances.

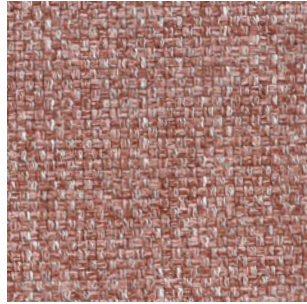


Note:

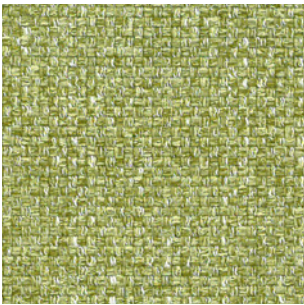
- The real colours and tones of the fabrics may differ from the digital image due to the scan process and the colour calibration of the different screens. Always request real fabric samples before ordering.
- Consult our Fabric and Leather Matrix to know about the availability of this material by product line.



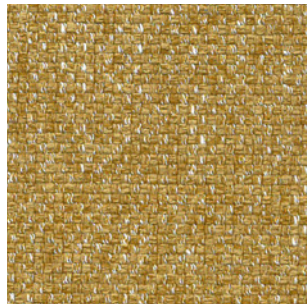
12



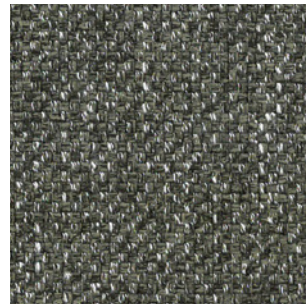
10



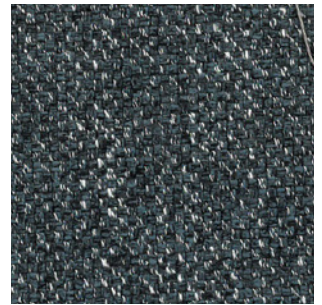
14



15



16



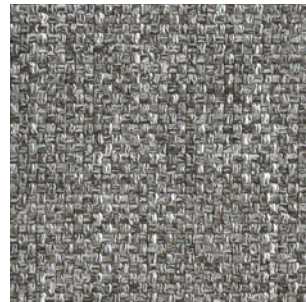
11



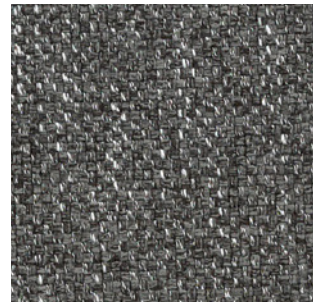
5



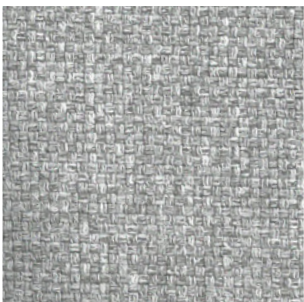
6



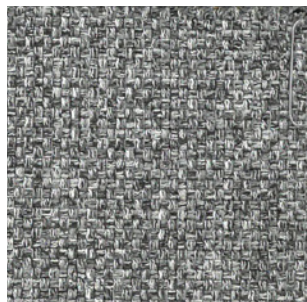
7



8



4



3



30



1

INCLASS

G3 - APTA

TECHNICAL DATA

Composition:

71% polyester, 18% modacrylic, 8% recycled cotton, 3% polyamide.

Light fastness:

4 - 5, ISO 105 B02.

Abrasion:

60.000 Martindale ISO 12947.

Resistance to pilling:

5, ISO 12945-2.

Fastness to rubbing:

4 - 5, ISO 105-X12.

Tensile strength:

>350N, ISO 13934-1.

Tear strength:

>20N, BS 4303.

>3N, DIN 53859-5.

Flammability:

EN 1021 - 1 (cigarette).

EN 1021 - 2 (match).

BS 5852 (cigarette).

Environment:

Oeko-Tex® standard 100.

Characteristics:

Anti-stain protection.

Antibacterial and virus protection protection.

Width: ±140cm

Weight: ±518gr/m



***Batch to batch variations may occur within commercial tolerances.

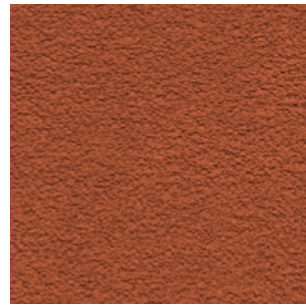


8%
recycled material
Recycled
Cotton

Note:

- The real colours and tones of the fabrics may differ from the digital image due to the scan process and the colour calibration of the different screens. Always request real fabric samples before ordering.

- Consult our Fabric and Leather Matrix to know about the availability of this material by product line.



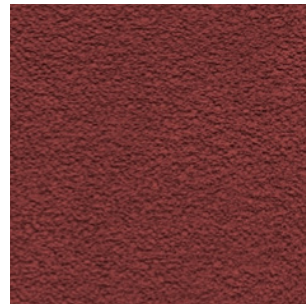
62



625



156



266



618



324



80



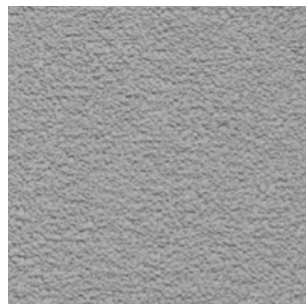
111



43



336



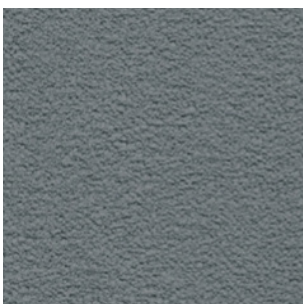
13



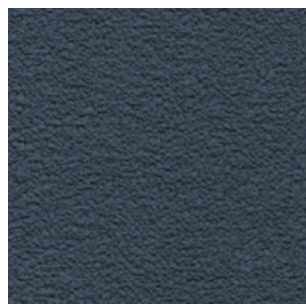
271



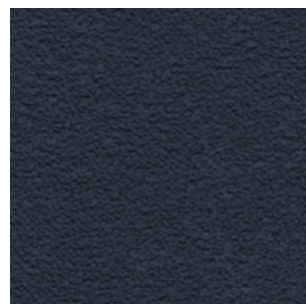
339



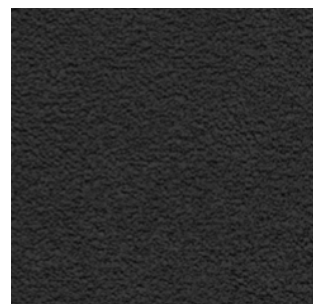
602



11



60



15

INCLASS

G3 - CURA

TECHNICAL DATA

Composition:

98% recycled polyester, 2% polyester.

Light fastness:

5 - 8, ISO 105 B02.

Abrasion:

100.000 Martindale ISO 12947-2.

Resistance to pilling:

4 - 5, ISO 12945-2.

Fastness to rubbing:

Wet 4 - 5.

Dry 4 - 5, ISO 105-X12.

Flammability:

EN 1021 - 1 (cigarette).

EN 1021 - 2 (match).

CA TB 117-2013.

ASTM E 84 Class 1.

Environment:

Oeko-Tex® standard 100.

Complies with EU Ecolabel.

Width: ±140cm

Weight: ±420gr/m²



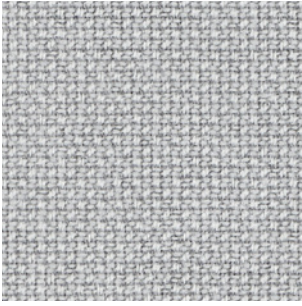
40° shrinkage max. 1%

***Batch to batch variations may occur within commercial tolerances.

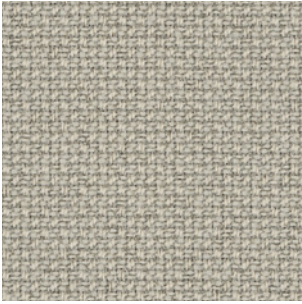


Note:

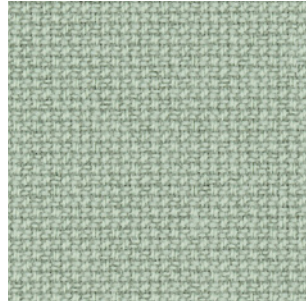
- The real colours and tones of the fabrics may differ from the digital image due to the scan process and the colour calibration of the different screens. Always request real fabric samples before ordering.
- Consult our Fabric and Leather Matrix to know about the availability of this material by product line.



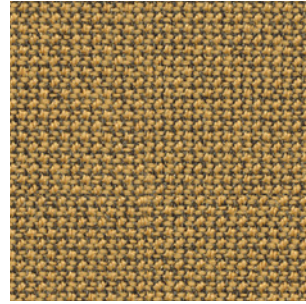
60000



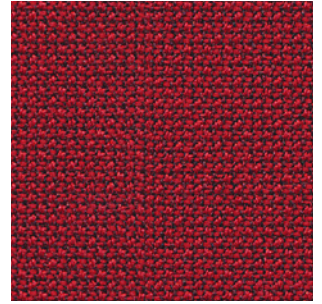
61232



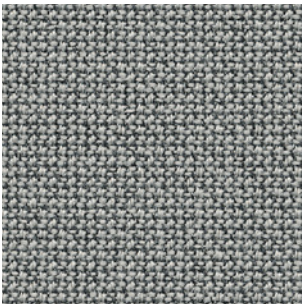
68262



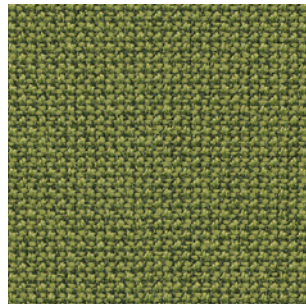
62083



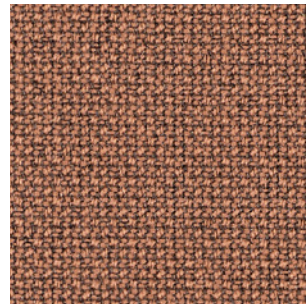
64013



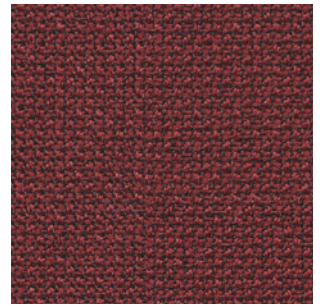
60112



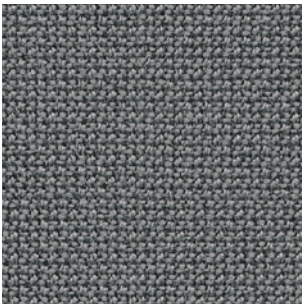
68181



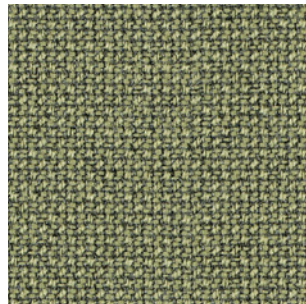
61257



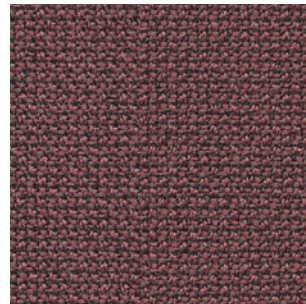
64196



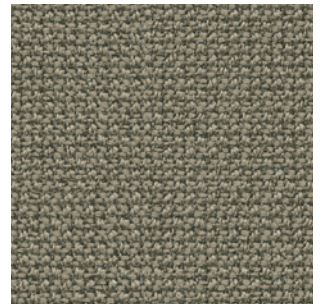
60110



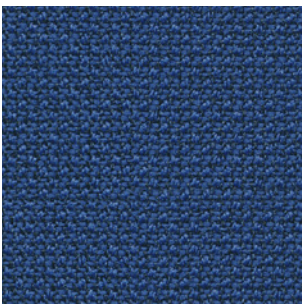
68261



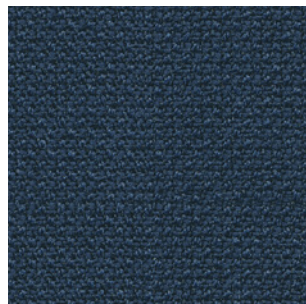
64195



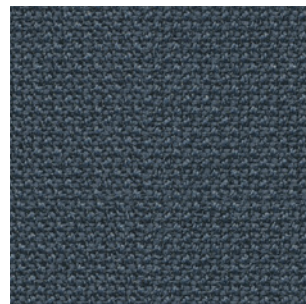
61169



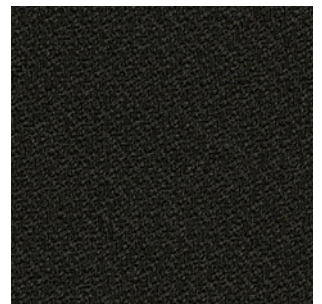
65105



66170



66166



60999

INCLASS

G3 - IBER

TECHNICAL DATA

Composition:

69% PES, 30% cotton, 1% polyamide.

Light fastness:

4 - 5, ISO 105 B02.

Abrasion:

70.000 Martindale ISO 12947 - BS 2543.

Resistance to pilling:

4 - 5, ISO 12945-2.

Fastness to rubbing:

Wet 4 - 5.

Dry 4.

Seam splinge:

Warp <3mm.

Weft <4mm.

Flammability:

BS 5852 Part 1.

Environment:

Oeko-Tex® standard 100.

Width: ±140cm

Weight: ±570gr/m²



***Batch to batch variations may occur within commercial tolerances.



70%
recycled material
Recycled
Cotton



Note:

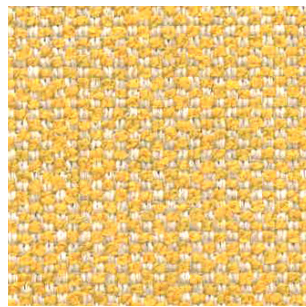
- The real colours and tones of the fabrics may differ from the digital image due to the scan process and the colour calibration of the different screens. Always request real fabric samples before ordering.
- Consult our Fabric and Leather Matrix to know about the availability of this material by product line.



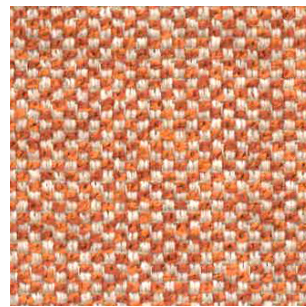
01



09



10



14



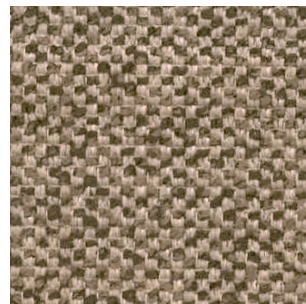
18



19



04



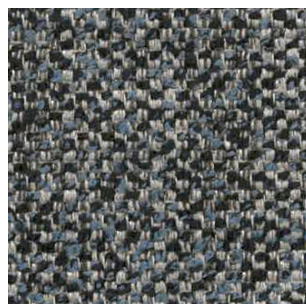
55



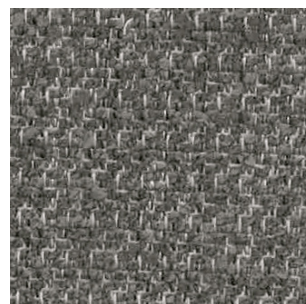
38



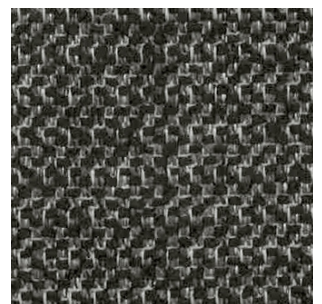
07



37



91



90

INCLASS

G3 - CALMA

TECHNICAL DATA

Composition:

Topcoat: 70% Vinyl, 30% P.U.
Backing: 100% Microfiber Polyester.

Light fastness:

>4.

Abrasion:

>100.000 Martindale.

Breaking strength:

Warp >180N.
Weft >330N, ISO 1421.

Tear strength:

Warp >25N/cm.
Weft >28N/cm, ISO 4674-1.

Flex Bally:

>100.000 cycles.

Width: 140cm.

Weight: 853gr/m².



***Batch to batch variations may occur within commercial tolerances.

Note:

- The real colours and tones of the fabrics may differ from the digital image due to the scan process and the colour calibration of the different screens. Always request real fabric samples before ordering.
- Consult our Fabric and Leather Matrix to know about the availability of this material by product line.



407



415



425



477



412



411



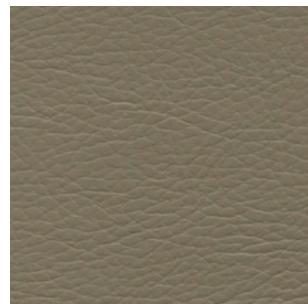
421



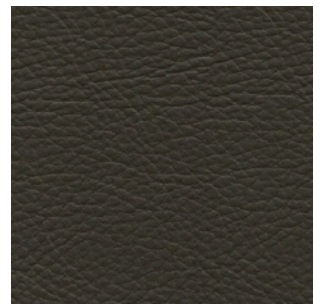
401



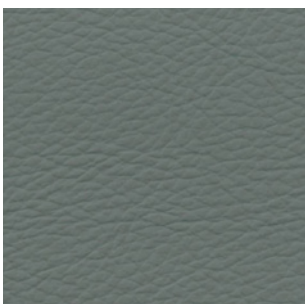
418



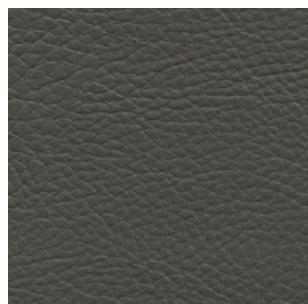
419



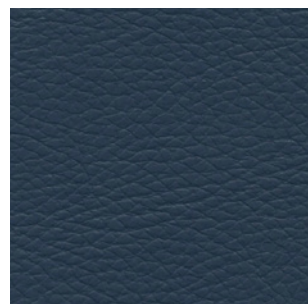
423



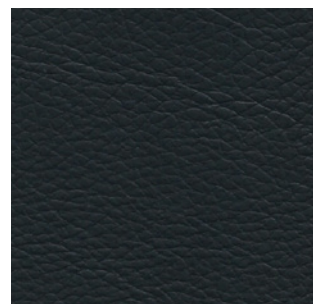
470



475



469



490

INCLASS

G3 - RIVET

By Camira

TECHNICAL DATA

Composition:

100% REPREVE® recycled polyester.

Light fastness:

6, EN ISO 105-B02, Method 3.

Abrasion:

≥80.000 Martindale EN ISO 12947-2.

Fastness to rubbing:

Wet 4.

Dry 4, ISO 105 X12.

Flammability:

EN 1021 - 1 (cigarette).

EN 1021 - 2 (match).

BS 7176 Low Hazard.

UNI 9175 Class 1 IM.

Environment:

Complies with EU Ecolabel.

Certificate Indoor Advantage™ Gold.

Width: 140cm

Weight: 280gr/m²



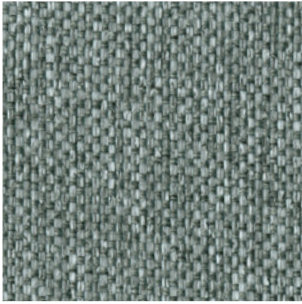
***Batch to batch variations may occur within commercial tolerances.



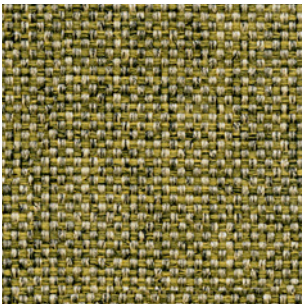
100%
recycled material
Post Consumer
Recycled
Polyester

Note:

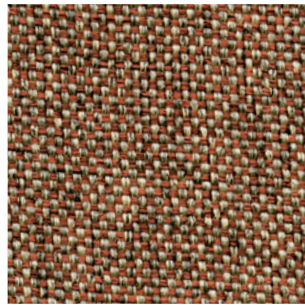
- The real colours and tones of the fabrics may differ from the digital image due to the scan process and the colour calibration of the different screens. Always request real fabric samples before ordering.
- Consult our Fabric and Leather Matrix to know about the availability of this material by product line.



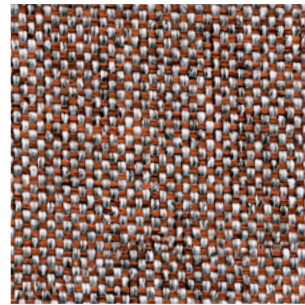
26



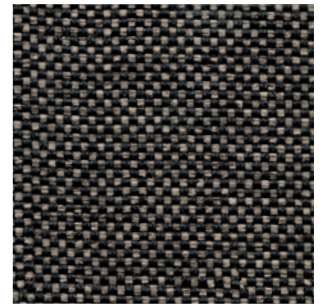
10



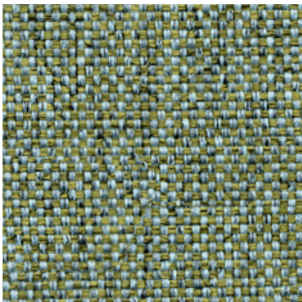
14



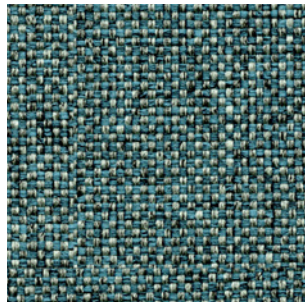
09



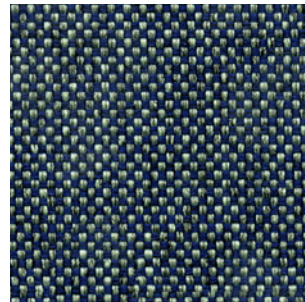
36



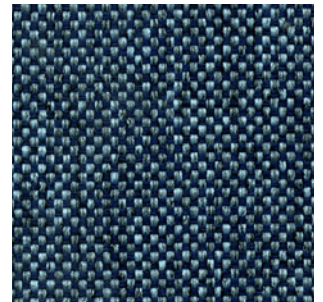
11



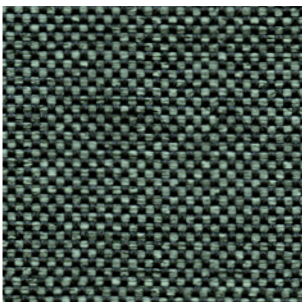
21



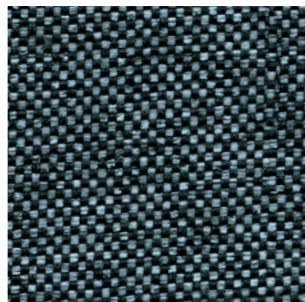
27



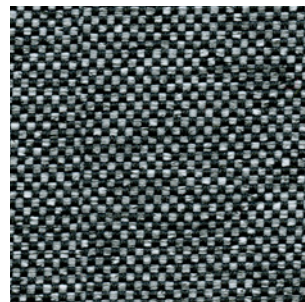
24



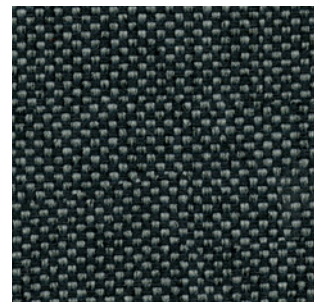
34



48



50



37

INCLASS

G3 - ERA

By Camira

TECHNICAL DATA

Composition:

100% polyester.

Light fastness:

5, EN ISO 105 B02.

Abrasion:

≥100.000 Martindale EN ISO 12947.

Fastness to rubbing:

Wet 4.

Dry 4, ISO 105 X12.

Flammability:

EN 1021 - 1 (cigarette).

EN 1021 - 2 (match).

BS 7176 Low Hazard.

EN 13501-1 Adhered Class B, s1, d0.

EN 13501-1 Un-adhered Class C, s1, d0.

Environment:

OEKO-TEX® Standard 100.

Certificate Indoor Advantage™ Gold.

Width: 140cm

Weight: 320gr/m²

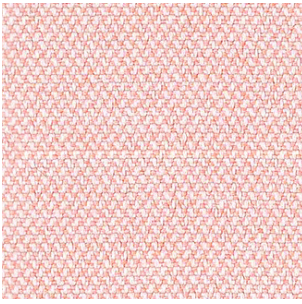


***Batch to batch variations may occur within commercial tolerances.

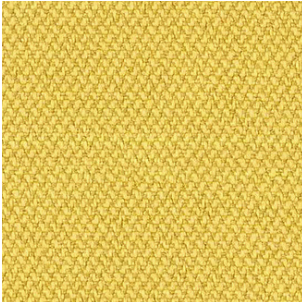


Note:

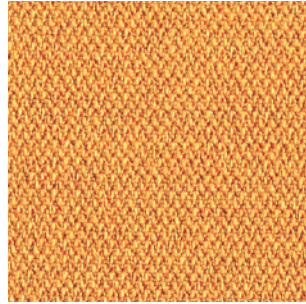
- The real colours and tones of the fabrics may differ from the digital image due to the scan process and the colour calibration of the different screens. Always request real fabric samples before ordering.
- Consult our Fabric and Leather Matrix to know about the availability of this material by product line.



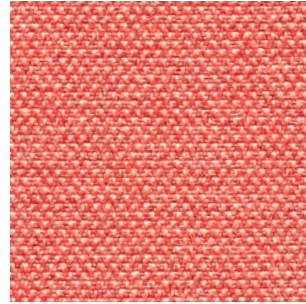
19



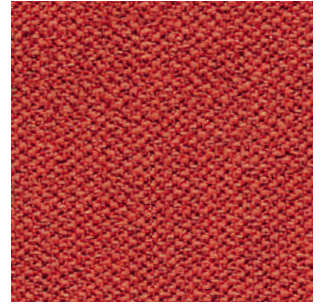
3



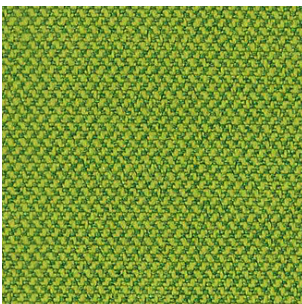
27



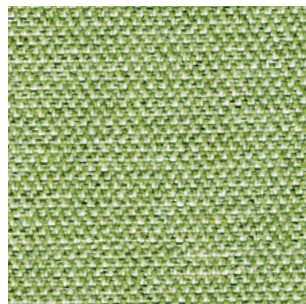
26



29



16



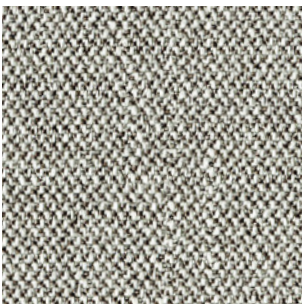
34



1



2



45



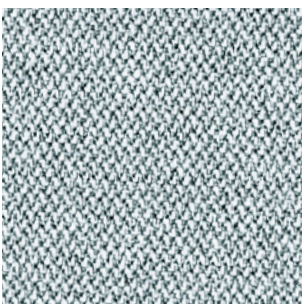
11



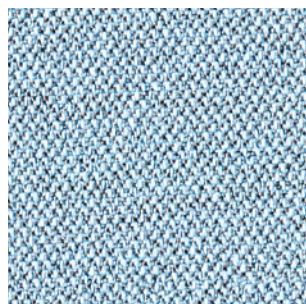
13



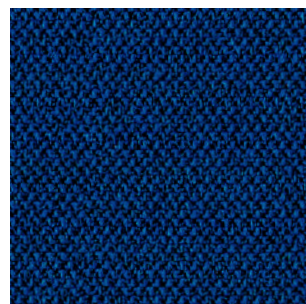
21



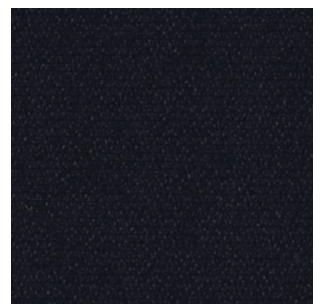
46



39



40



14

INCLASS

G3 - MEDLEY

By Gabriel

TECHNICAL DATA

Composition:

100% polyester.

Light fastness:

5 - 7, EN ISO 105 B02.

Abrasion:

75.000 Martindale EN ISO 12947-2.

Resistance to pilling:

4, EN ISO 12945-2.

Fastness to rubbing:

Wet 4 - 5.

Dry 4 - 5, ISO 105 X12.

Flammability:

BS EN 1021 1&2 Cigarette and Match.

BS EN 1021-1 Cigarette.

BS 5852 Part 1 0,1 Cigarette and Match.

BS 476 Part 7, class 2.

Class Uno UNI 9174 - UNI 8457.

ÖNORM B 3825-B2-3800-Q1 UK.

CA TB 117.

ASTM E 84.

Environment:

Oeko-Tex® standard 100

100% free of heavy metals.

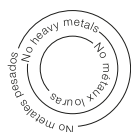
Width: 140cm

Weight: 510gr/m²



60° shrinkage max. 1%

***Batch to batch variations may occur within commercial tolerances.

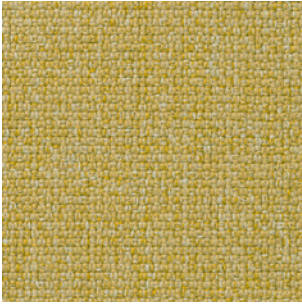


Note:

- The real colours and tones of the fabrics may differ from the digital image due to the scan process and the colour calibration of the different screens. Always request real fabric samples before ordering.
- Consult our Fabric and Leather Matrix to know about the availability of this material by product line.



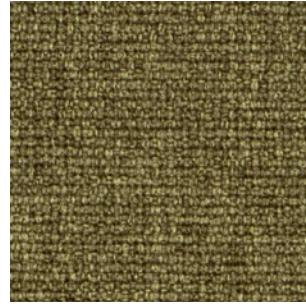
65011



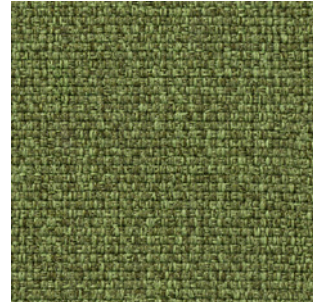
62054



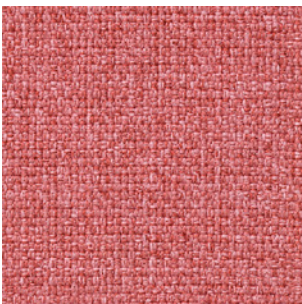
61003



67002



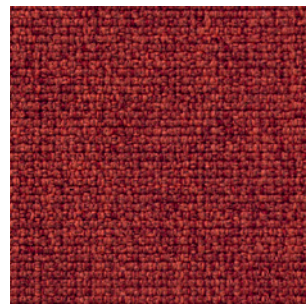
68005



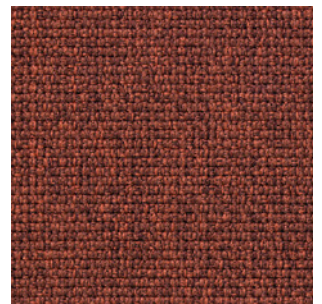
63064



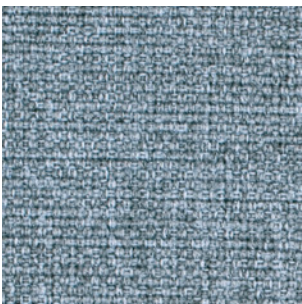
64019



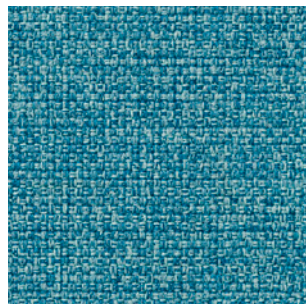
63016



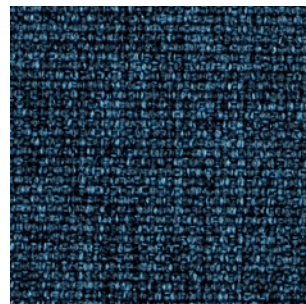
63063



66008



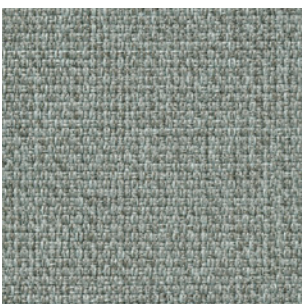
67006



66010



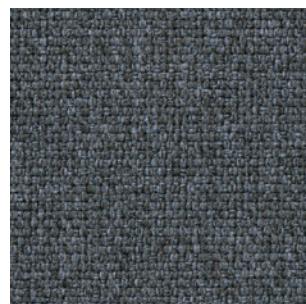
61004



60003



60167



60004



60999

INCLASS

G4 - MAIN LINE FLAX

By Camira

TECHNICAL DATA

Composition:

75% virgin wool, 25% flax.

Light fastness:

5, ISO 105 B02.

Abrasion:

≥50.000 Martindale EN ISO 12947-2:1999.

Resistance to pilling:

4 - 5, ISO 12945-2.

Fastness to rubbing:

Wet 3.

Dry 4, ISO 105 X12.

Flammability:

EN 1021 - 1 (cigarette).

EN 1021 - 2 (match).

BS 7176 Low Hazard.

BS 5852 Ignition source 5.

BS 7176 Medium Hazard.

NF D 60-013.

ÖNORM B 3825 & A 3800-1.

UNI 9175 Class 1 IM.

BS 5867-2: Type B Curtains & Drapes.

IMO FTP Code (Part 8).

Environment:

Complies with EU Ecolabel.

Certificate Indoor Advantage™ Gold.

Width: 140cm

Weight: 437gr/m²

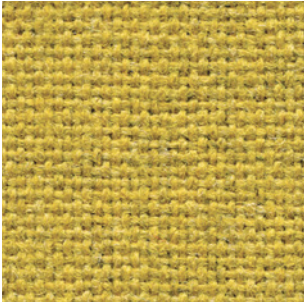


***Batch to batch variations may occur within commercial tolerances.

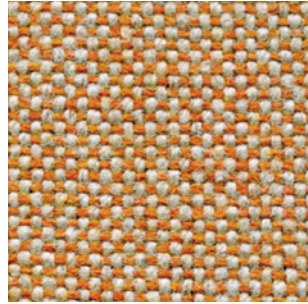


Note:

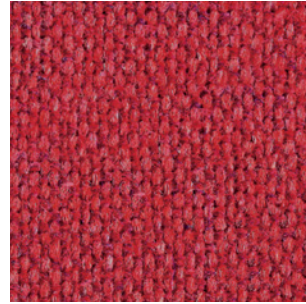
- The real colours and tones of the fabrics may differ from the digital image due to the scan process and the colour calibration of the different screens. Always request real fabric samples before ordering.
- Consult our Fabric and Leather Matrix to know about the availability of this material by product line.



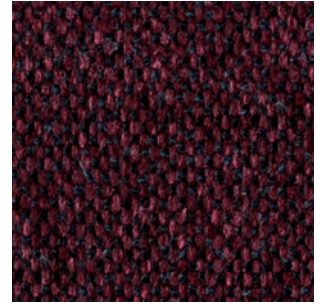
17



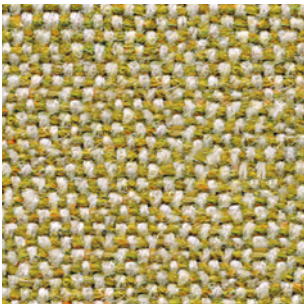
8



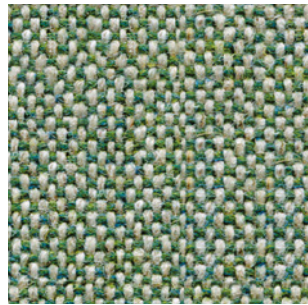
1



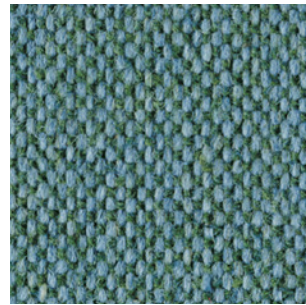
40



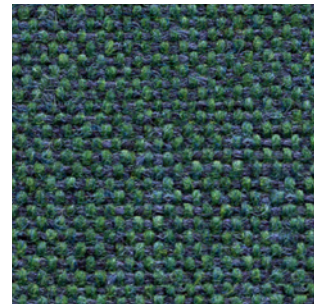
7



9



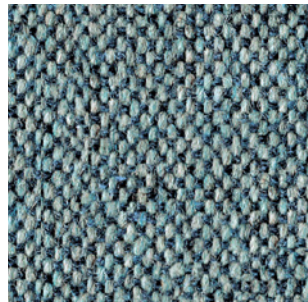
25



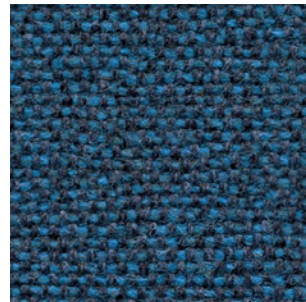
32



2



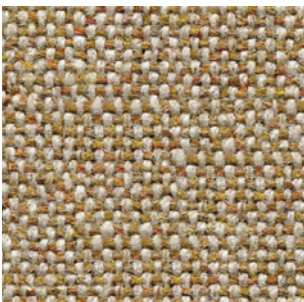
22



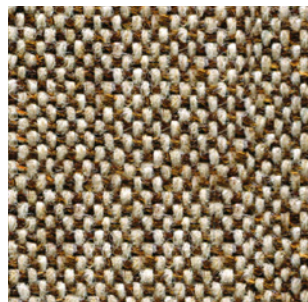
35



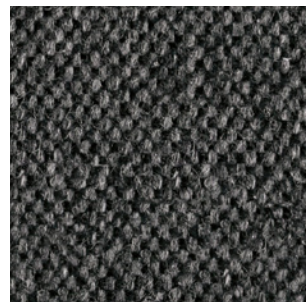
36



12



23



16



28

INCLASS

G4 - CONNECT

By Gabriel

TECHNICAL DATA

Composition:

48% wool, 41% recycled polyester, 9% polyamide, 2% polyester.

Light fastness:

5 - 7, ISO 105 B02.

Abrasion:

90,000 Martindale EN ISO 12947-2.

Resistance to pilling:

4 - 5, ISO 12945-2.

Fastness to rubbing:

Wet 4 - 5.

Dry 4 - 5, ISO 105 X12.

Flammability:

EN 1021 - 1 (cigarette).

EN 1021 - 2 (match).

BS 5852 Crib 5.

CA TB 117-2013.

Class Uno UNI 9175 Class 1 I EMME.

Environment:

Oeko-Tex® standard 100.

Complies with EU Ecolabel.

Width: 140cm

Weight: 370gr/m²



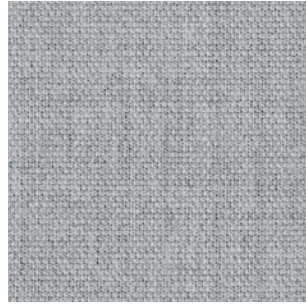
***Batch to batch variations may occur within commercial tolerances.



41%
recycled material
Post Consumer
Recycled
Polyester

Note:

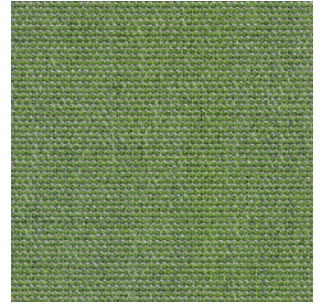
- The real colours and tones of the fabrics may differ from the digital image due to the scan process and the colour calibration of the different screens. Always request real fabric samples before ordering.
- Consult our Fabric and Leather Matrix to know about the availability of this material by product line.



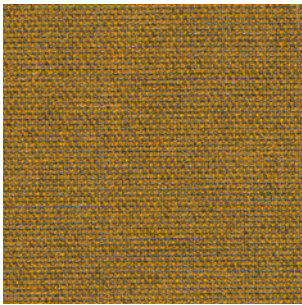
60147



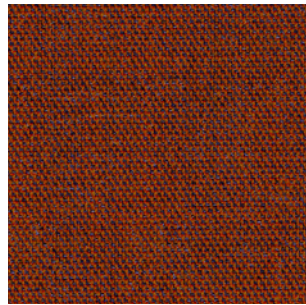
61208



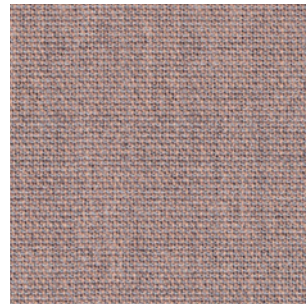
68229



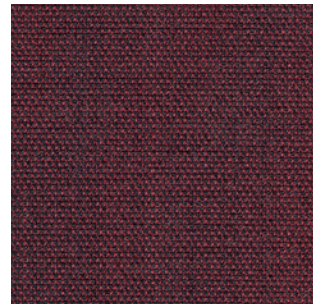
62109



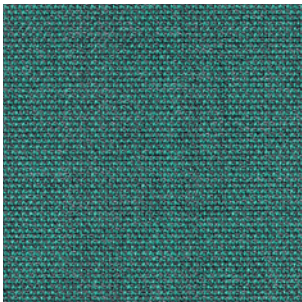
63107



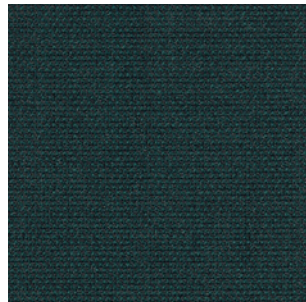
64229



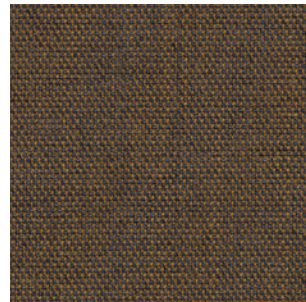
64230



67113



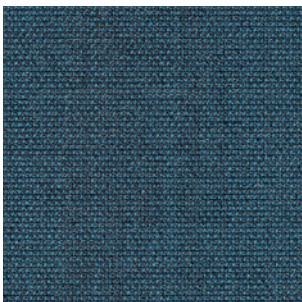
67115



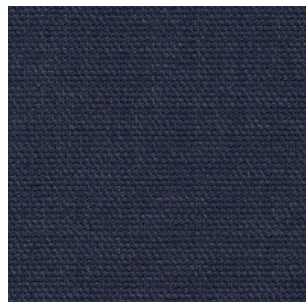
61209



61210



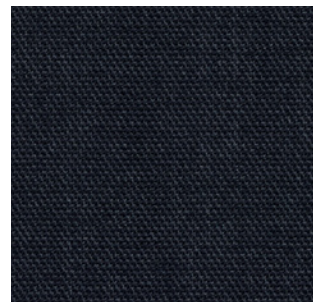
66205



65127



60152



60999

INCLASS

G4 - VALENCIA

By Spradling

TECHNICAL DATA

Composition:

Topcoat: 100% Vinyl.

Backing: 100% Polyester Hi-Loft^{2TM}.

Light fastness:

1000 hours, XENOTEST DIN 54004/NTC 1479.

Abrasion:

300.000 cycles de Martindale EN ISO 12947 Part 2.

Cold crack resistance:

-23°C.

Characteristics:

Antimicrobial protection.

Anibacterial protection.

Antimycotic protection.

Flammability:

EU: EN 1021 Part 1 y 2.

ES: UNE 23.727-90 1R/M.2.

FR: NF P 92-503/M2.

DE: DIN 4102 B2.

IT: UNI 9175 (1987) / UNI 9175/FA1 (1994) Classe 1.IM (UNO I EMME).

AT: ÖNORM B 3825, Gruppe 1 - Schwerbrennbares Verhalten.

AT: ÖNORM A 3800 Teil 1, Qualmbildungsklasse Q1 - schwachqualmend.

IMO FTP 2010 Code MSC.307 (88) Part 8 3.1 & 3.2.

US: FMVSS 302.

US: FAR 25/853.

(MED) Marine Equipment Directive.

ECE R118.02 (replaces Directive 95/28/CE Annexes 6, 7 & 8.

EN 71-2:2006+A1:2007 - Toy safety - Parte 2: Inflammability.

Width: 140cm

Weight: 685gr/m²



***Batch to batch variations may occur within commercial tolerances.



PERMABLOK®
ADVANCED VINYL PROTECTION

Note:

- The real colours and tones of the fabrics may differ from the digital image due to the scan process and the colour calibration of the different screens. Always request real fabric samples before ordering.

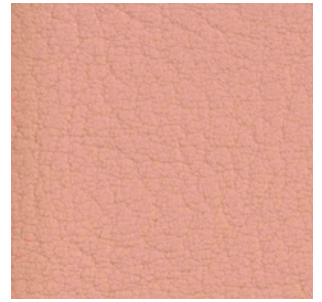
- Consult our Fabric and Leather Matrix to know about the availability of this material by product line.



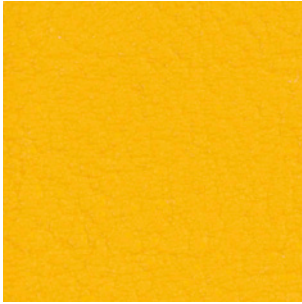
2117



0002



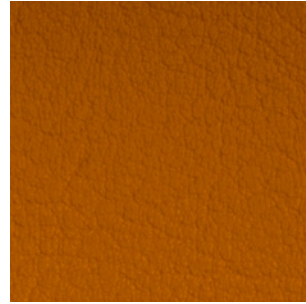
2114



2111



2116



0035



2074



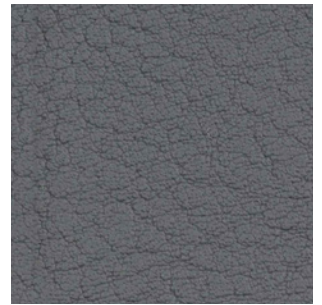
2110



4002



4001



5065



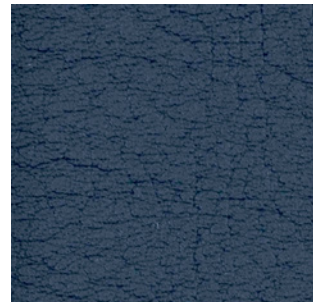
4040



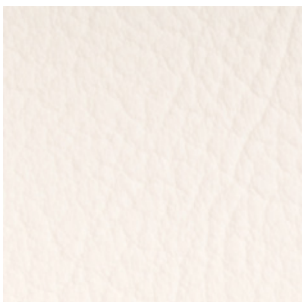
4045



4003



2108



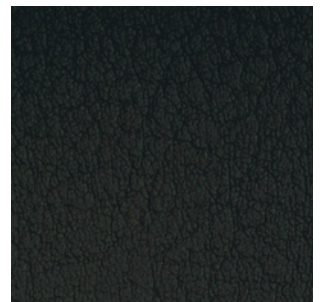
8032



4044



4041



9035

INCLASS

G4 - STEP

By Gabriel

TECHNICAL DATA

Composition:

100% trevira CS.

Light fastness:

5 - 7, ISO 105 B02.

Abrasion:

100.000 Martindale EN ISO 12947.

Resistance to pilling:

4 - 5, ISO 12945-2.

Fastness to rubbing:

Wet 4 - 5. - Dry 4 - 5, ISO 105 X12.

Flammability:

IMO MSC 307(88) Annex 1 part 8.

MED.

Certificate IMO.

DIN 4102 B1.

NFP 92-503/504/505 M1.

BS EN 1021 1&2 Cigarette and Match.

BS EN 1021-1 Cigarette.

BS 5852 Part 1 0,1 Cigarette and Match.

BS 5852 Crib 5.

ÖNORM B 3825-B1-3800-Q1 UK.

FAR/JAR 25.853 (a) (i) (ii).

BS 7176 Medium hazard.

AM 18 - NF D 60-013-(only for fabric).

CA TB 117-2013.

Class Uno UNI 9175 Class 1 I EMME.

DIN EN 13501-1 B-s1,d0.

Environment:

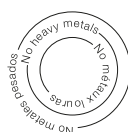
Oeko-Tex - EU Ecolabel - 100% free of heavy metals.

Width: 140cm

Weight: 470gr/m²

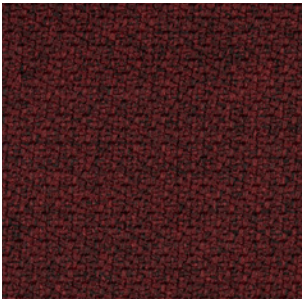


***Batch to batch variations may occur within commercial tolerances.

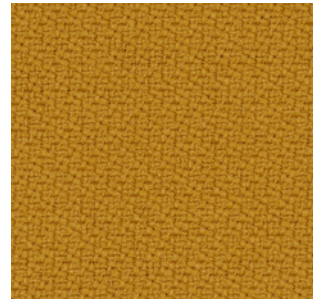


Note:

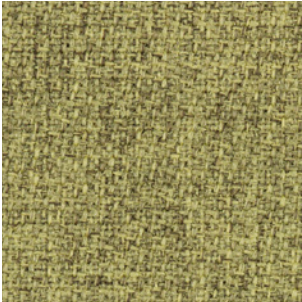
- The real colours and tones of the fabrics may differ from the digital image due to the scan process and the colour calibration of the different screens. Always request real fabric samples before ordering.
- Consult our Fabric and Leather Matrix to know about the availability of this material by product line.



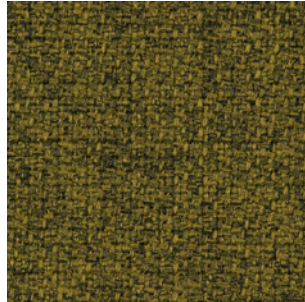
2442 - 64159



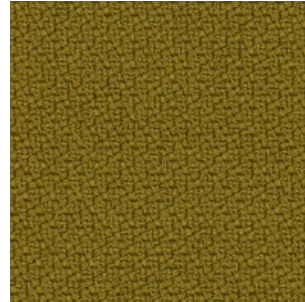
2440 - 62057



2442 - 68301



2442 - 68165



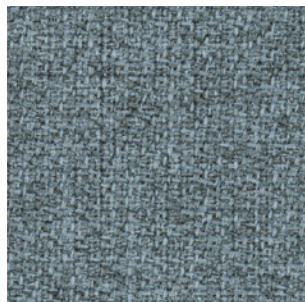
2440 - 68165



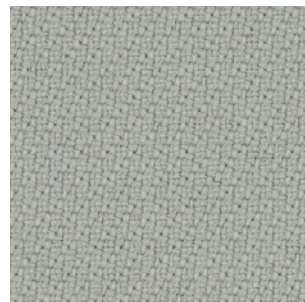
2440 - 61149



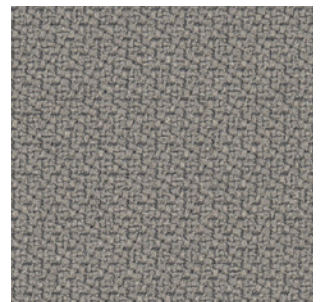
2442 - 60004



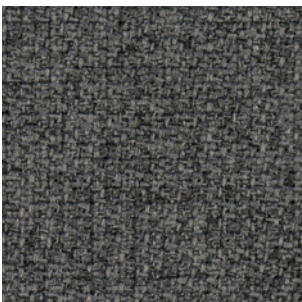
2442 - 67004



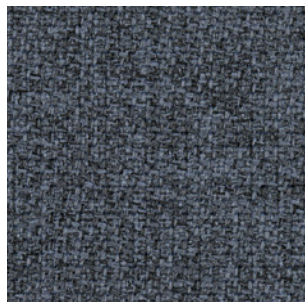
2440 - 60004



2440 - 60011



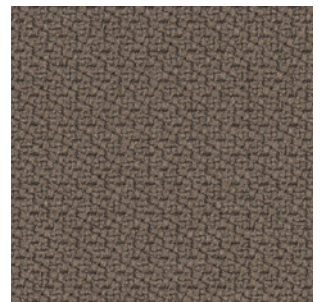
2442 - 60011



2442 - 66152



2440 - 66764



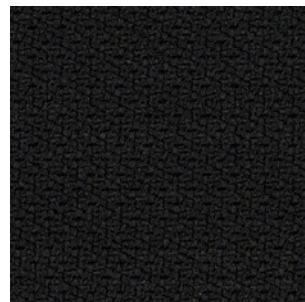
2440 - 60090



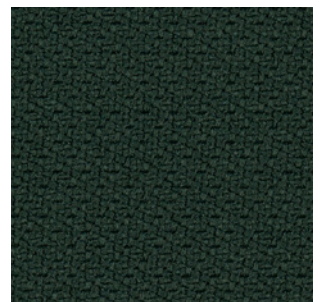
2442 - 61103



2442 - 60021



2440 - 60999



2440 - 68121

INCLASS

G5 - DOLCE

By Spradling

TECHNICAL DATA

Composition:

Topcoat: 100% polyurethane.

Backing: 100% rayon.

Light fastness:

40 hours, XENOTEST DIN 54004/NTC 1479.

Abrasion:

≥300.000 Martindale EN ISO 12947 Part 2.

Cold crack resistance:

-23°C.

Characteristics:

Antibacterial protection.

Flammability:

EU: EN 1021 Part 1 y 2

US: FMVSS 302

UK: BS 5852 Part 2 CRIB 5

IMO FTP 2010 Code MSC.307 (88) Part 8 3.1 & 3.2.

Width: 140cm

Weight: 685gr/m²



***Batch to batch variations may occur within commercial tolerances.

Note:

- The real colours and tones of the fabrics may differ from the digital image due to the scan process and the colour calibration of the different screens. Always request real fabric samples before ordering.

- Consult our Fabric and Leather Matrix to know about the availability of this material by product line.



6703



6706



6708



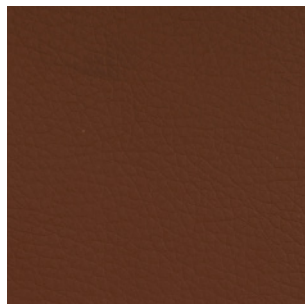
6719



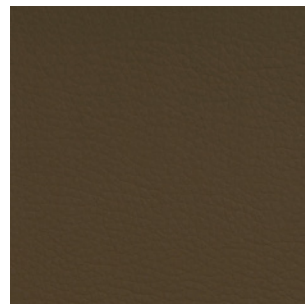
6714



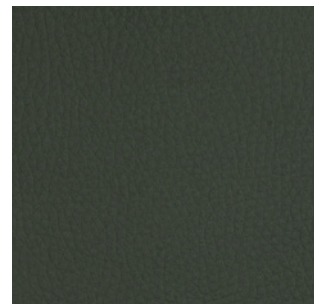
6709



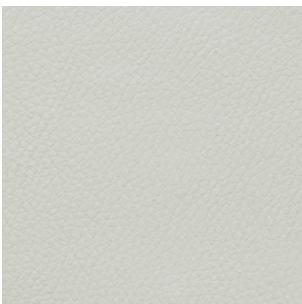
6711



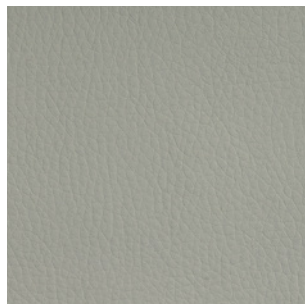
6712



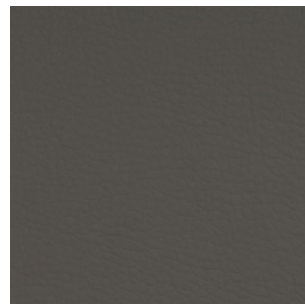
6717



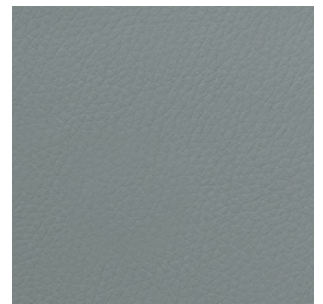
6729



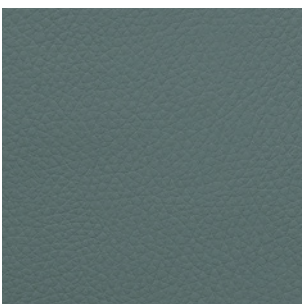
6726



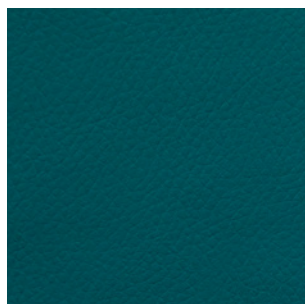
6727



6736



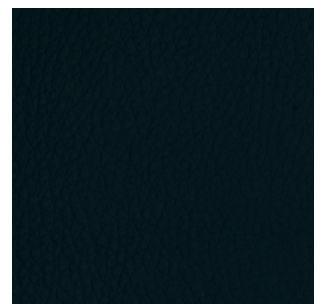
6735



6734



6724



6728

INCLASS

G5 - SYNERGY

By Camira

TECHNICAL DATA

Composition:

95% virgin wool, 5% polyamide.

Light fastness:

5, ISO 105-B02.

Abrasion:

≥100.000 Martindale EN ISO 12947.

Fastness to rubbing:

Wet 4.

Dry 4, ISO 105 X12.

Flammability:

EN 1021 - 1 (cigarette).

EN 1021 - 2 (match).

BS 7176 Low Hazard.

NF D 60-013.

ÖNORM B 3825 & A 3800-1 (sobre 58kg/m³ Foam CMHR).

UNI 9175 Classe 1 IM.

EN 13501-1 Adhered Class D, s1, d0.

EN 13501-1 Un-adhered Class E, s2, d0.

IMO FTP Code (Part 8).

Environment:

Complies with EU Ecolabel.

Certificate Indoor Advantage™ Gold.

Width: 140cm

Weight: 400gr/m²

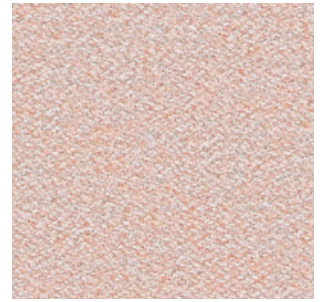


***Batch to batch variations may occur within commercial tolerances.

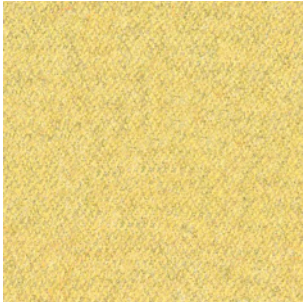


Note:

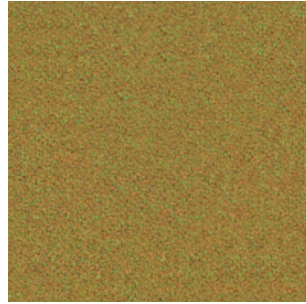
- The real colours and tones of the fabrics may differ from the digital image due to the scan process and the colour calibration of the different screens. Always request real fabric samples before ordering.
- Consult our Fabric and Leather Matrix to know about the availability of this material by product line.



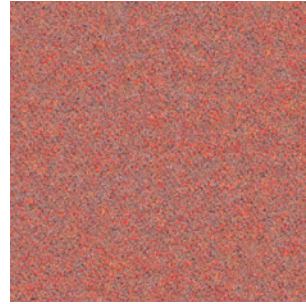
74



45



43



73



84



32



22



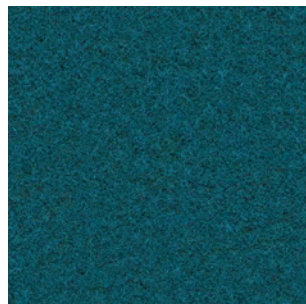
37



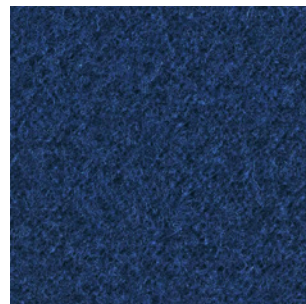
34



49



59



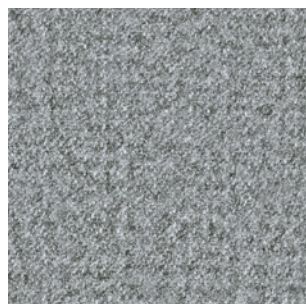
62



41



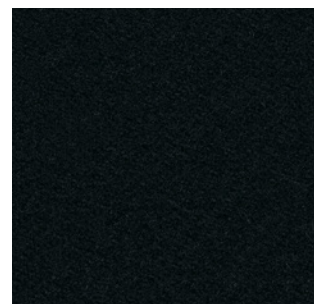
8



16



17



27

INCLASS

G5 - REMIX

By Kvadrat

TECHNICAL DATA

Designer:

Giulio Ridolfo.

Composition:

90% new wool, 10% nylon.

Light fastness:

5 - 7, ISO 105-B02.

Abrasion:

100.000 Martindale EN ISO 12947.

Resistance to pilling:

4, EN ISO 12945.

Flammability:

AS/NZS 1530.3.

BS 5852 part 1.

EN 1021-1/2.

IMO FTP Code 2010: Part 8.

NF D 60 013.

NFPA 260.

Önorm B1/Q1.

UNI 9175 1IM.

US Cal. Bull. 117-2013.

Environment:

Complies with EU ecolabel "The Flower".

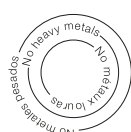
100% free of heavy metals.

Width: 140cm

Weight: 415gr/m²

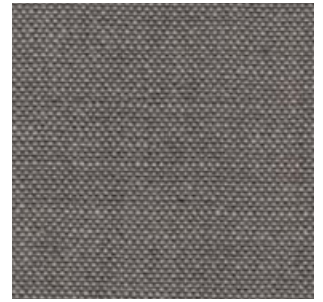


***Batch to batch variations may occur within commercial tolerances.



Note:

- The real colours and tones of the fabrics may differ from the digital image due to the scan process and the colour calibration of the different screens. Always request real fabric samples before ordering.
- Consult our Fabric and Leather Matrix to know about the availability of this material by product line.



136



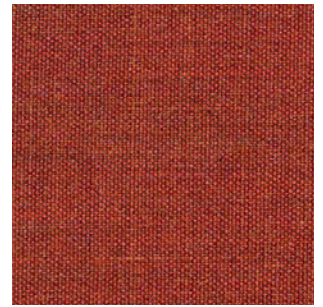
433



452



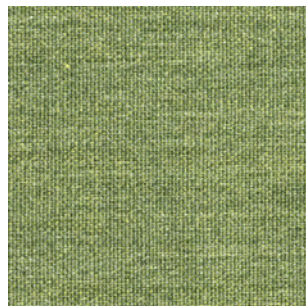
346



653



326



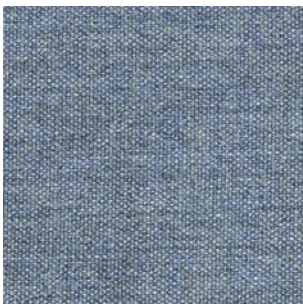
933



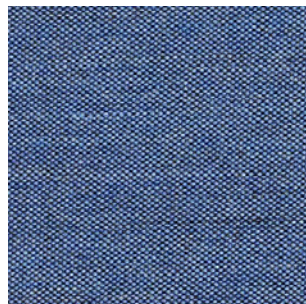
152



356



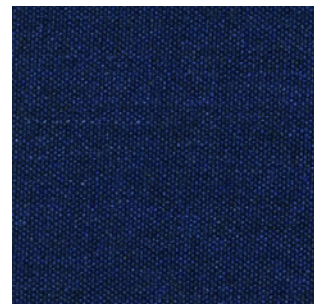
733



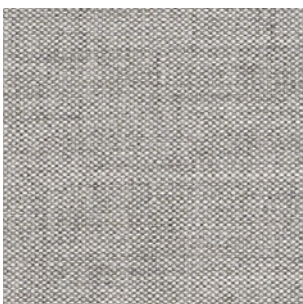
743



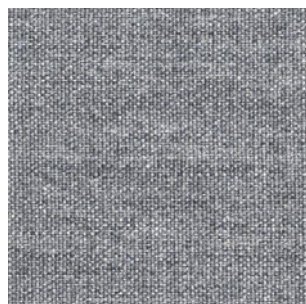
266



773



123



143



163



183

INCLASS

G5 - CANVAS

By Kvadrat

TECHNICAL DATA

Designer:

Giulio Ridolfo.

Composition:

90% new wool, 10% nylon.

Light fastness:

5 - 7, ISO 105-B02.

Abrasion:

100.000 Martindale EN ISO 12947.

Resistance to pilling:

4 - 5, EN ISO 12945.

Flammability:

AS/NZS 1530.3.

BS 5852 Crib 5 when flameprotected.

BS 5852, ignition source 3.

BS 5852 part 1.

DIN 4102 B2.

IMO FTP Code 2010: Part 8.

NF D 60 013.

NFPA 260.

Önorm B1/Q1.

UNI 9175 1IM.

US Cal. Bull. 117-2013.

Environment:

Complies with EU ecolabel "The Flower".

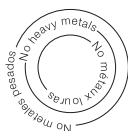
100% free of heavy metals.

Width: 140cm

Weight: 480gr/m².

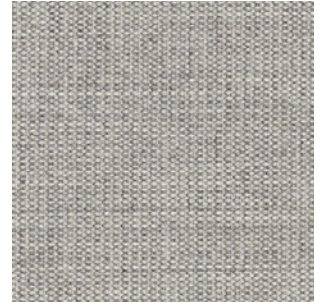


***Batch to batch variations may occur within commercial tolerances.



Note:

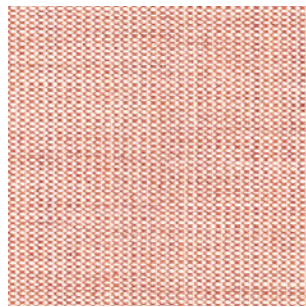
- The real colours and tones of the fabrics may differ from the digital image due to the scan process and the colour calibration of the different screens. Always request real fabric samples before ordering.
- Consult our Fabric and Leather Matrix to know about the availability of this material by product line.



124



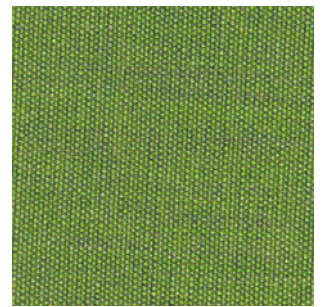
244



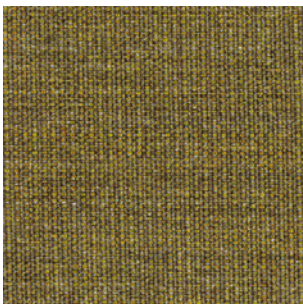
614



654



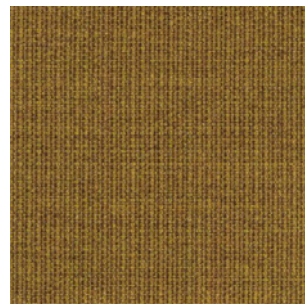
954



964



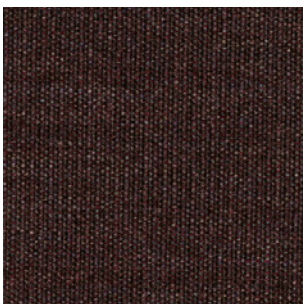
454



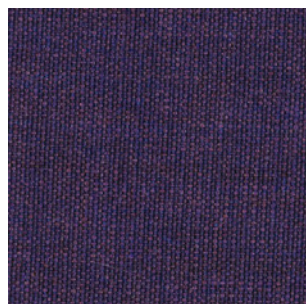
424



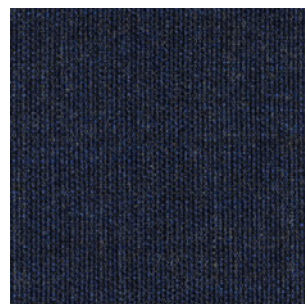
264



364



684



794



174

INCLASS

G6 - STEELCUT TRIO

By Kvadrat

TECHNICAL DATA

Designer:

Frans Dijkmeijer and Giulio Ridolfo.

Composition:

90% new wool, 10% nylon.

Light fastness:

5 - 7 ISO 105-B02.

Abrasion:

100.000 Martindale EN ISO 12947.

Resistance to pilling:

4, EN ISO 12945.

Flammability:

AS/NZS 1530.3

AS/NZS 3837 class 2.

BS 5852 part 1.

DIN 4102 B2.

EN 1021-1/2.

IMO FTP Code 2010: Part 8.

NF D 60 013.

NFPA 260.

Önorm B1/Q1.

UNI 9175 1IM.

US Cal. Bull. 117-2013.

Environment:

Complies with EU ecolabel "The Flower".

100% free of heavy metals.

Width: 140cm

Weight: 770gr/m²



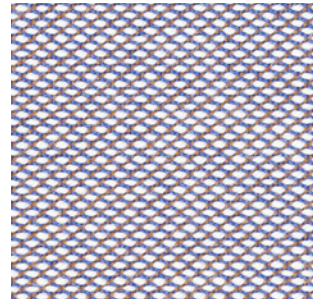
***Batch to batch variations may occur within commercial tolerances.



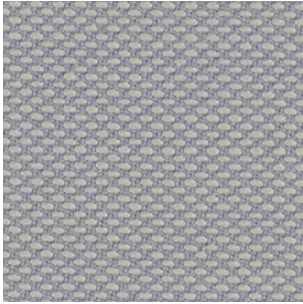
Note:

- The real colours and tones of the fabrics may differ from the digital image due to the scan process and the colour calibration of the different screens. Always request real fabric samples before ordering.

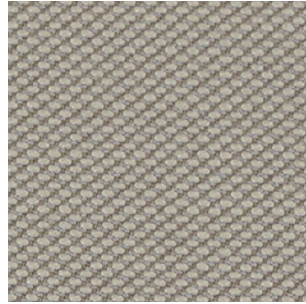
- Consult our Fabric and Leather Matrix to know about the availability of this material by product line.



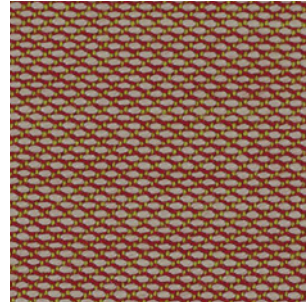
806



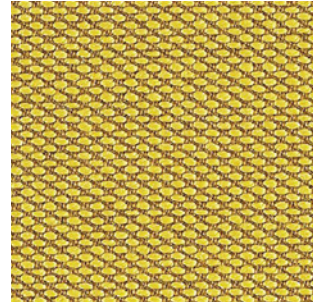
105



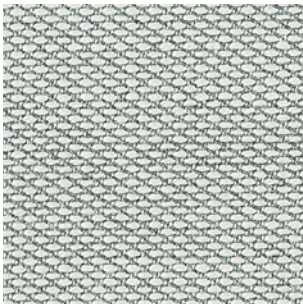
205



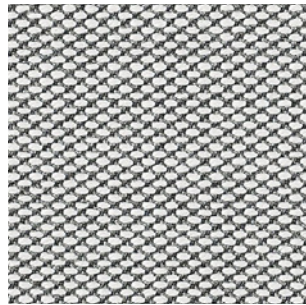
515



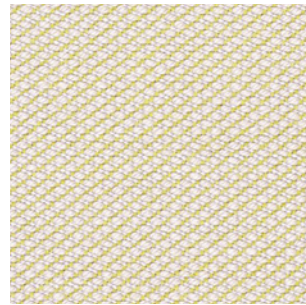
453



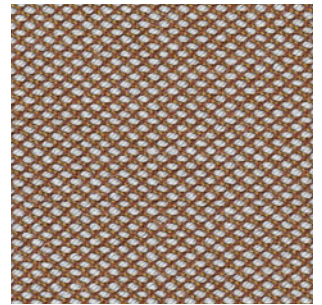
113



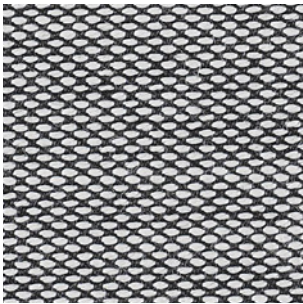
133



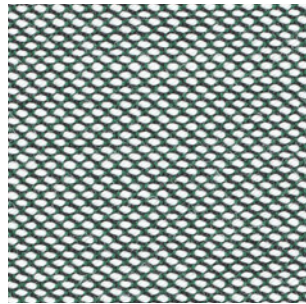
236



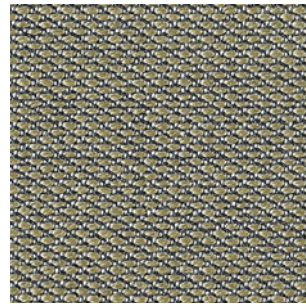
476



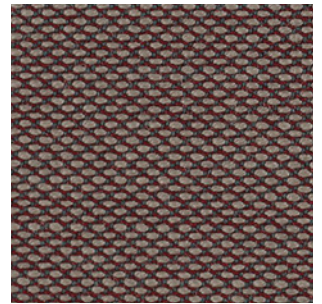
124



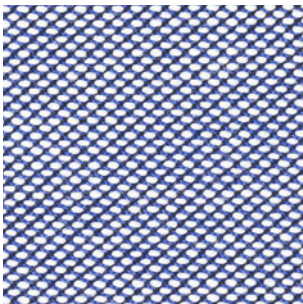
916



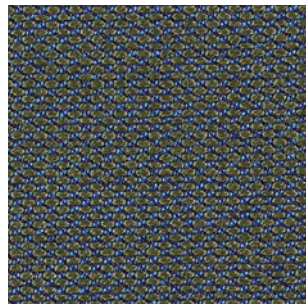
253



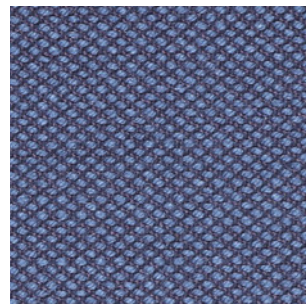
645



716



883



796



383

INCLASS

G6 - FIORD

By Kvadrat

TECHNICAL DATA

Designer:

Louise Sigvardt & Tone Barnung.

Composition:

92% new wool, 8% nylon.

Light fastness:

5 - 7, ISO 105-B02.

Abrasion:

60.000 Martindale EN ISO 12947.

Resistance to pilling:

4 - 5, EN ISO 12945.

Flammability:

AS/NZS 3837 class 2.

ASTM E84 Class A Adhered.

ASTM E84 Class A Unadhered.

BS 5852 part 1.

EN 1021-1/2.

IMO FTP Code 2010:Part 8.

NF D 60 013.

NFPA 260

ÖNORM B1/Q1

UNI 9175 1IM.

US Cal. Bull. 117-2013.

Environment:

Complies with EU ecolabel "The Flower"

100% free of heavy metals.

Width: 140cm

Weight: 500gr/m²



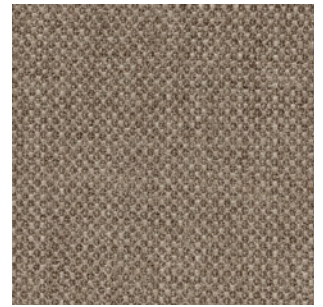
***Batch to batch variations may occur within commercial tolerances.



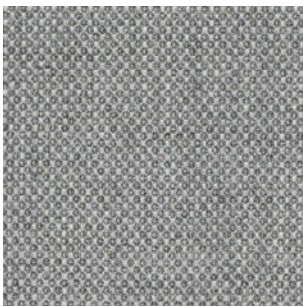
Note:

- The real colours and tones of the fabrics may differ from the digital image due to the scan process and the colour calibration of the different screens. Always request real fabric samples before ordering.

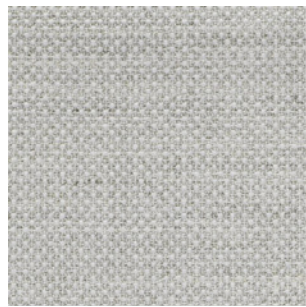
- Consult our Fabric and Leather Matrix to know about the availability of this material by product line.



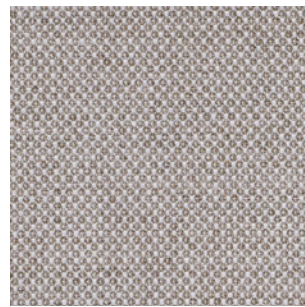
271



151



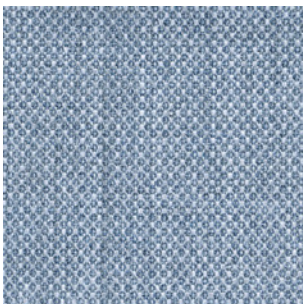
121



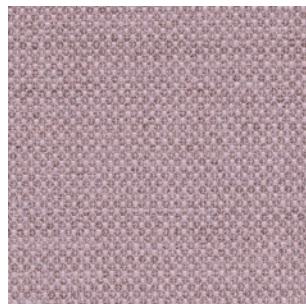
251



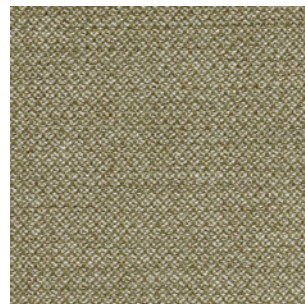
451



751



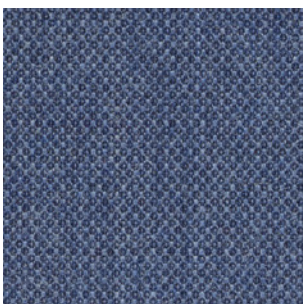
551



951



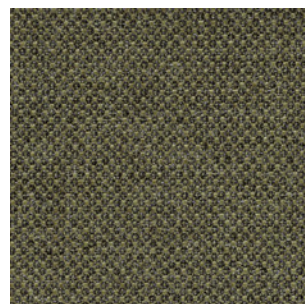
371



771



591



961



191

INCLASS

G7 - HALLINGDAL

By Kvadrat

TECHNICAL DATA

Designer:

Nanna Ditzel.

Composition:

70% new wool, 30% viscose.

Light fastness:

5 - 7 ISO 105-B02.

Abrasion:

100.000 Martindale EN ISO 12947.

Resistance to pilling:

3, EN ISO 12945.

Flammability:

AS/NZS 1530.3.

AS/NZS 3837.

BS 5852 Crib 5.

BS5852 part 1.

DIN 4102 B2.

EN 1021-1/2.

IMO FTP Code 2010: Part 8.

NF D 60 013.

NFPA 260.

Önorm B1/Q1.

UNI 9175 1IM.

US Cal. Bull. 117 - 2013.

Environment:

Complies with EU ecolabel "The Flower".

Width: 140cm

Weight: 795gr/m²

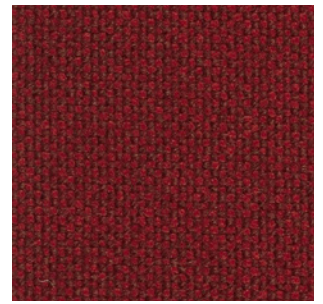


***Batch to batch variations may occur within commercial tolerances.



Note:

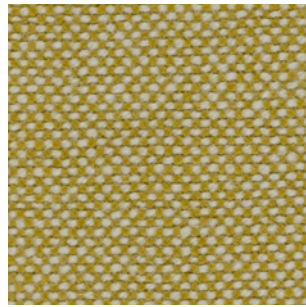
- The real colours and tones of the fabrics may differ from the digital image due to the scan process and the colour calibration of the different screens. Always request real fabric samples before ordering.
- Consult our Fabric and Leather Matrix to know about the availability of this material by product line.



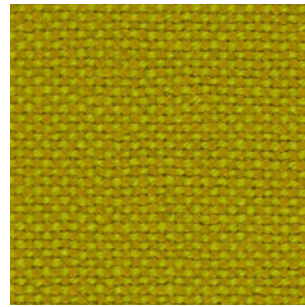
687



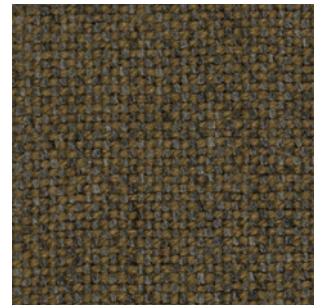
200



407



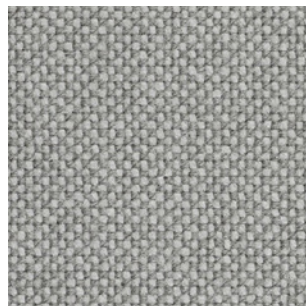
420



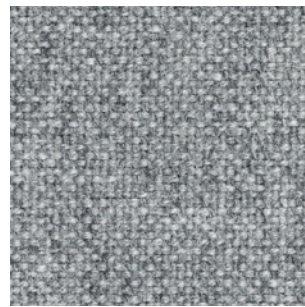
227



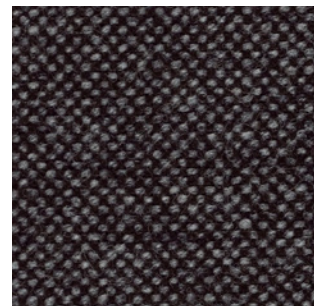
100



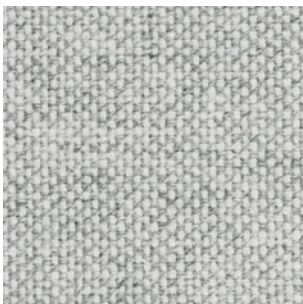
123



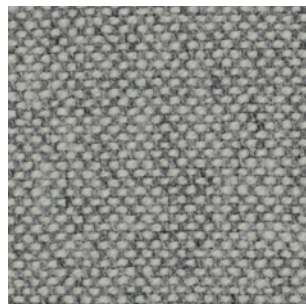
130



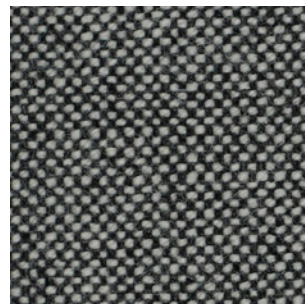
368



110



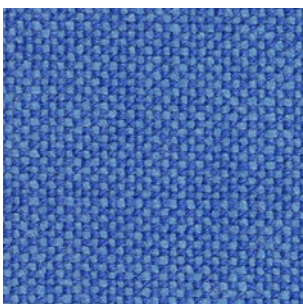
116



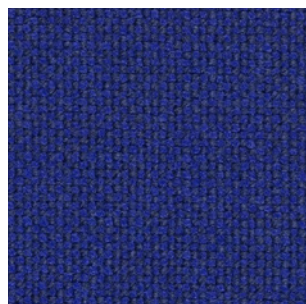
126



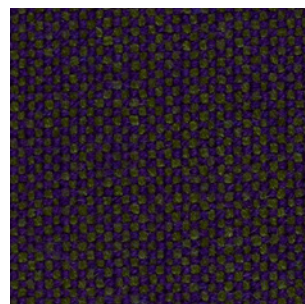
180



733



773



968



376

G10 - LEATHER

TECHNICAL DATA

Composition:

Cow leather.

Light fastness:

≥4/5, UNI EN ISO 105B02.

Fastness to rubbing:

Wet ≥4 (150 cycles).

Dry ≥4 (500 cycles).

Perspiration ≥4 (80 cycles), UNI EN ISO 11640 - 11641 (pH8).

Tear strength:

>20N, EN ISO 3377-1.

Determination of PH:

>3,5, EN ISO 4045.

Adhesion of the finish:

≥2, UNI EN ISO 11644.

Determination of dry ex resistance:

Without damage, UNI EN ISO 5402.

Flammability:

Ignition source 0 (cigarette).

Ignition source 1 (match).

BS 5852-1979.

BS EN 1021-1-2.

Thickness:

0,9 - 1,1mm

Average surface:

4,8 - 5,0m²

Maintenance:

Wash with neutral soap and water or with a cleaning product for leather.

***Batch to batch variations may occur within commercial tolerances.

Note:

- The real colours and tones of the fabrics may differ from the digital image due to the scan process and the colour calibration of the different screens. Always request a real leather sample before ordering.

- Consult our Fabric and Leather Matrix to know about the availability of this material by product line.



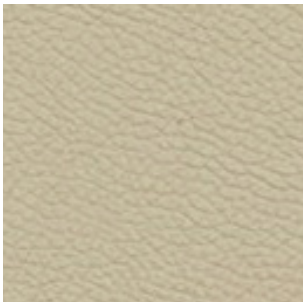
207



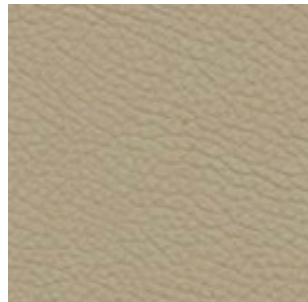
214



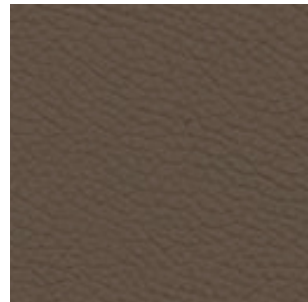
218



224



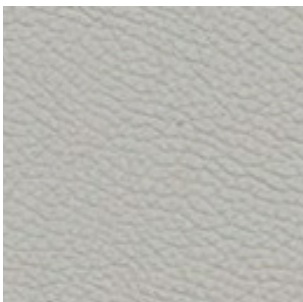
201



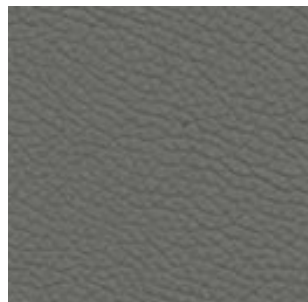
216



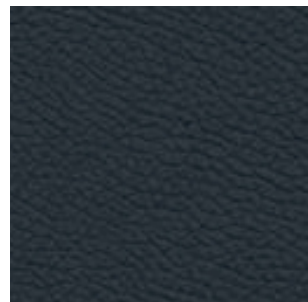
203



219



208



209



204

G11 - LEATHER

TECHNICAL DATA

Composition:

Cow leather.

Light fastness:

≥5, UNI EN ISO 105B02.

Fastness to rubbing:

Wet ≥4 (80 cycles).

Dry ≥4 (500 cycles).

Perspiration ≥4 (50 cycles), UNI EN ISO 11640 - 11641.

Tear strength:

≥20N, EN ISO 3377-1.

Determination of PH:

≥3,5 ≤0,7 EN ISO 4045.

Adhesion of the finish:

≥2,5N / 10mm, UNI EN ISO 11644.

Determination of dry flex resistance:

>50.000 cycles, UNI EN ISO 5402-1.

Flammability:

Ignition source 0 (cigarette)

Ignition source 1 (match), BS 5852-1:79.

Thickness:

0,9 - 1,1mm

Average surface:

4,8 - 5,0m²

Maintenance:

Wash with neutral soap and water or with a cleaning product for leather.

***Batch to batch variations may occur within commercial tolerances.

Note:

- The real colours and tones of the fabrics may differ from the digital image due to the scan process and the colour calibration of the different screens. Always request a real leather sample before ordering.

- Consult our Fabric and Leather Matrix to know about the availability of this material by product line.



333



348



346



320



331



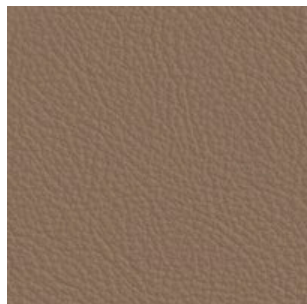
332



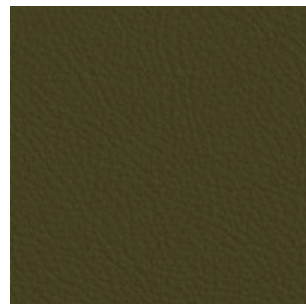
344



324



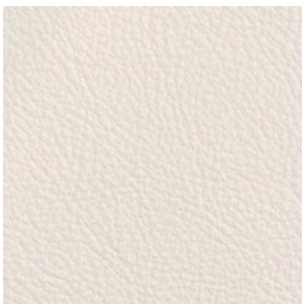
362



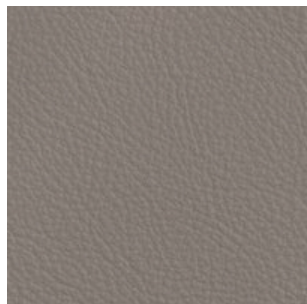
375



326



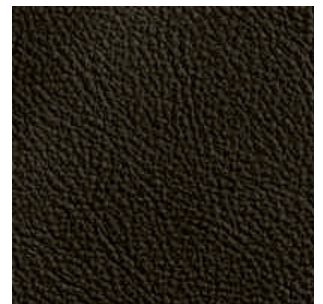
317



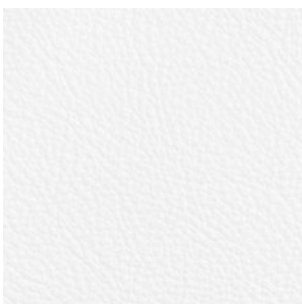
321



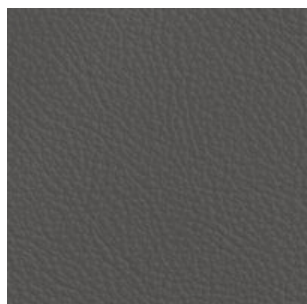
325



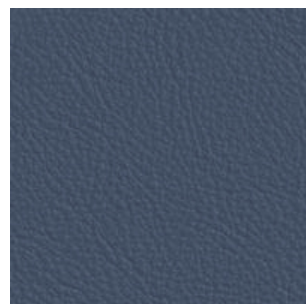
328



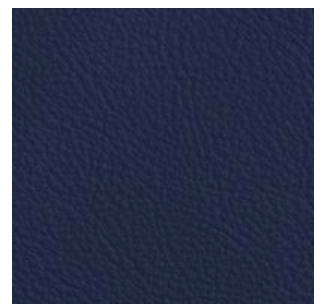
311



322



357



358

INCLASS

VELVET MESH

TECHNICAL DATA

Composition:

60% PA - 40% PL

Light fastness:

6 - Tolerance 5 to 8.
(Blue scale) - Xenotest
UNI EN ISO 105-B02.

Abrasion:

120.000 Martindale, EN ISO 12947-2.

Resistance to pilling:

5 - Tolerance 4 to 5. EN ISO 12945-2.

Dye fastness to rubbing:

4/5 - Tolerance 4 to 5. UNE-EN ISO 105-X12.

Inflamability:

UNE EN 1021-1.
CAL TB 117.

*Flammability performance is dependent on foam and glue used.

Width: ±140cm

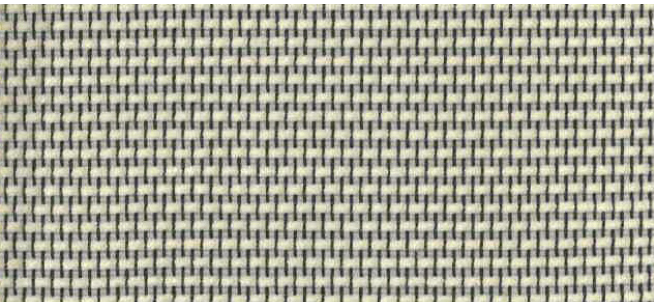
Weight: ±260gr/m²



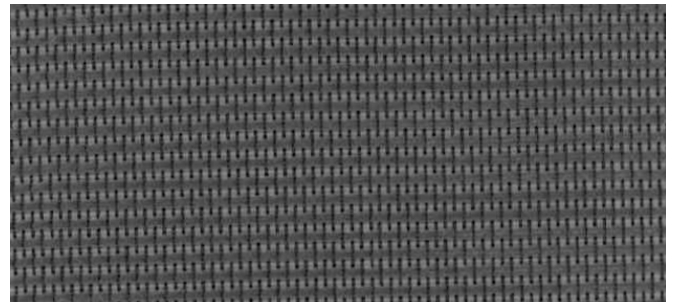
***Batch to batch variations may occur within commercial tolerances.

Note:

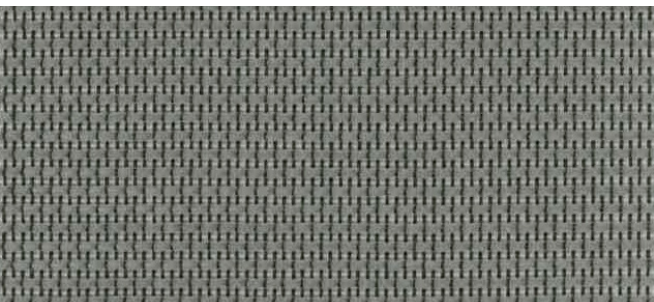
- The real colours and tones of the fabrics may differ from the digital image due to the scan process and the colour calibration of the different screens. Always request real fabric samples before ordering.
- Consult our Fabric and Leather Matrix to know about the availability of this material by product line.



1069



8007



8027



8033

INCLASS

NETEX

3D MESH

TECHNICAL DATA

Composition:

PES 100%.

Lightfastness:

4 - 5, ISO 105-B02.

Abrasion:

45.000 Martindale, EN ISO 12947-2.

Breaking strength:

Wrap N 620.

Weft N 1.200, EN ISO 13934-1.

Resistance to pilling:

5, EN ISO 12945-2.

Colour fastness to perspiration:

Acid 5

Alkaline 5, UNE-EN ISO 105-E04.

Flammability:

CA TB 117

EN ISO 10211 Cigarette.

Width: ±160cm

Weight: ±300gr/m²

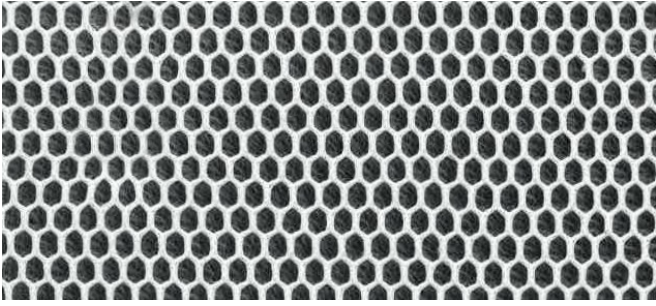


***Batch to batch variations may occur within commercial tolerances.

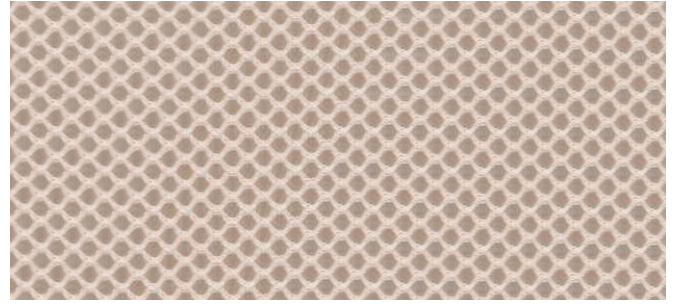
Note:

- The real colours and tones of the fabrics may differ from the digital image due to the scan process and the colour calibration of the different screens. Always request real fabric samples before ordering.

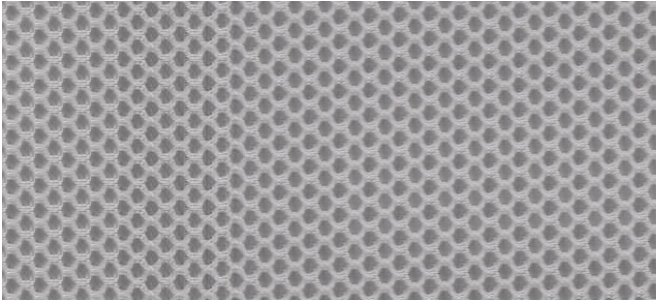
- Consult our Fabric and Leather Matrix to know about the availability of this material by product line.



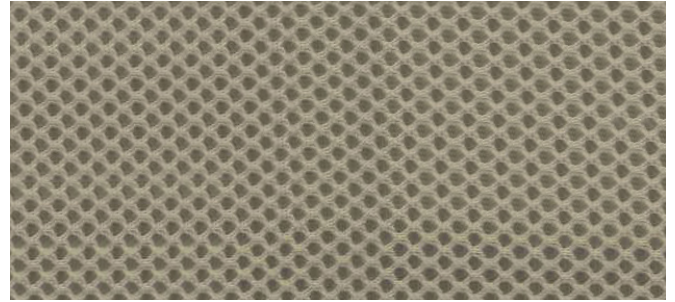
201



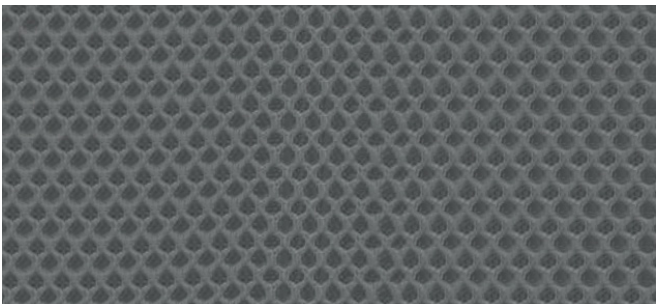
213



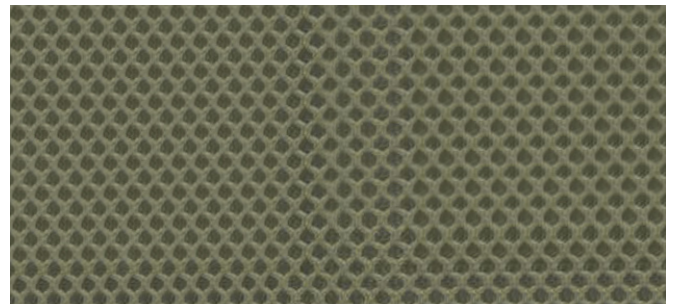
227



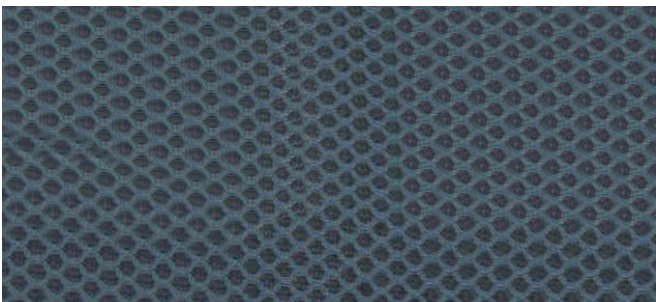
210



231



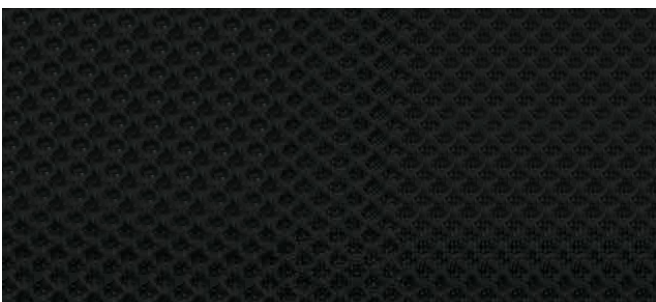
263



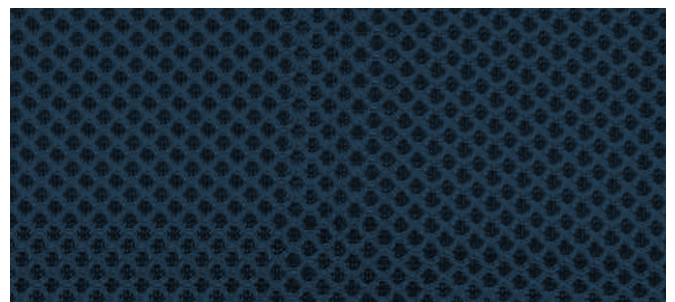
234



242



212



211

INCLASS

MAXI

3D MESH

TECHNICAL DATA

Composition:

100% recyclable polyamide.

Lightfastness:

≥5, ISO 105-B02.

Abrasion:

50.000 Martindale, EN ISO 12947-2.

Breaking strength:

Warp N 990 ±5%.

Weft N 439 ±5%, EN ISO 13934-1.

Resistance to pilling:

≥4/5, EN ISO 12945-2.

Dye fastness to rubbing:

≥4/5, UNE-EN ISO 105-X12.

Width: ±140cm

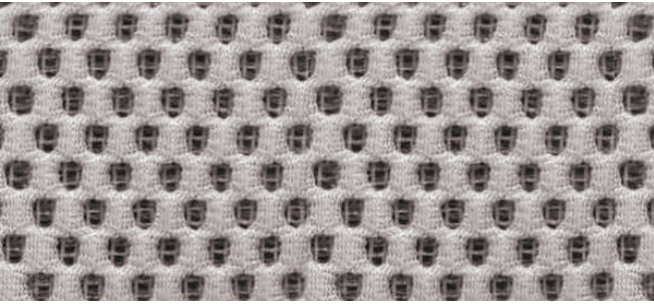
Weight: ±550gr/m²



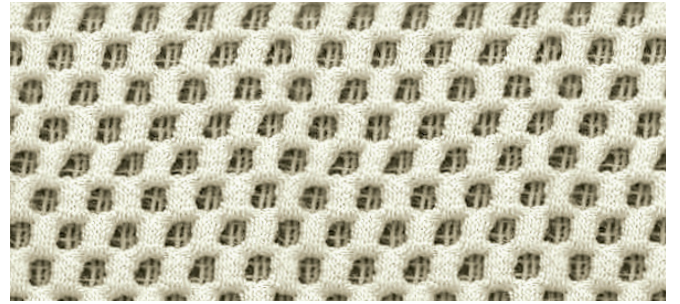
***Batch to batch variations may occur within commercial tolerances.

Note:

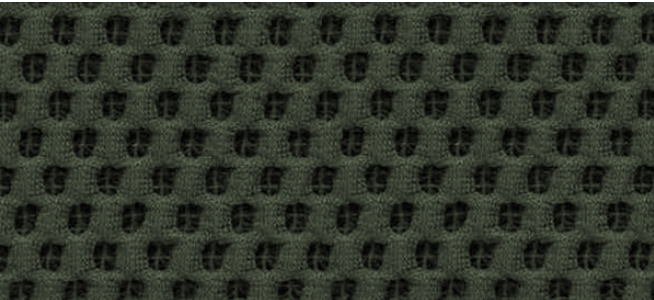
- The real colours and tones of the fabrics may differ from the digital image due to the scan process and the colour calibration of the different screens. Always request real fabric samples before ordering.
- Consult our Fabric and Leather Matrix to know about the availability of this material by product line.



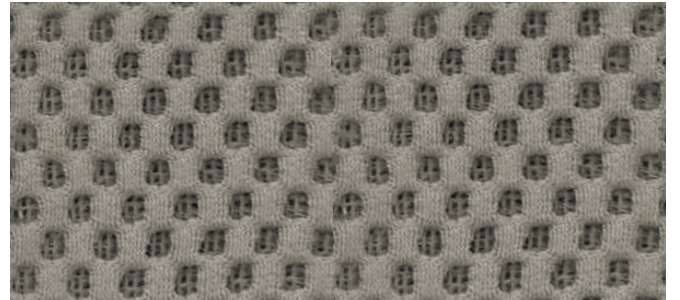
418



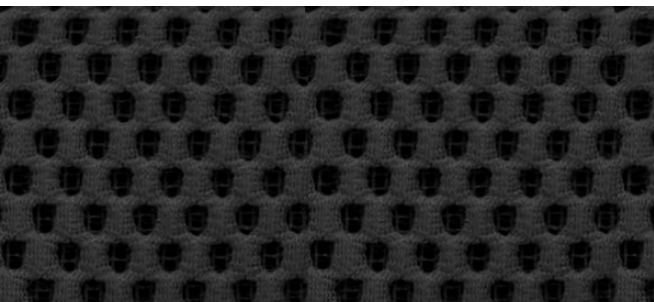
423



405



409



406



402

INCLASS

METAL PAINT & FINISHES

INCLASS powder coats all painted metal components for a durable finish eliminating VOC's (volatile organic compounds) from being released into the environment. The result is a finish that is abrasion and impact resistant.

We offer a wide palette of metal finishes that are priced by grades. M1 colours, M2 colours and chrome.



METAL PAINT MATRIX BY COLLECTION

	ALTEA	ANN	ARC	ARUM	ARYN	ARYN MAX	ARYN WOOD	BINAR 60	BINAR EXECUTIVE	DIVIDERS / SCREENS	DUNAS LOUNGE	DUNAS XL	DUNAS XS	ELIX	ENTROPY	ESCALAS	ESITT	FLAT	ITEK PRO	KORI	LAMINAR	LAN
METAL FINISHES																						
M1 Colours	•	•	•	•	•	•	•	•	○	•	•	•	•	•	•	•	○	•	○	○	•	•
M2 Colours	•	•	•	•	•	•	•	○	-	○	•	•	•	•	•	•	-	•	-	-	•	•
Chrome	•	•	•	•	•	•	•	○	-	-	-	○	•	-	-	-	-	•	-	-	-	-

LEGEND

- Not available
- Available
- See specifications

LAPSE	●	●	-
LEA	●	●	-
LEX	●	●	-
LIN TAPIZ	●	●	-
LIN WOOD	●	●	-
MALIBU	●	●	●
MARCUS	●	●	-
MILLENIUM	●	●	●
MOON	●	●	●
NIIM	●	●	●
NUME	●	●	-
PAU	●	●	-
PLANIA BENCH	●	●	-
PLANIA TABLE	●	●	-
REVER	○	-	●
SUI	●	●	-
SUN	●	●	●
TAIA	●	●	●
TAO	●	●	●
TEN	●	●	●
TETRIS	●	●	●
UNNIA	●	●	●
UNNIA TAPIZ	●	●	●
VARYA	●	●	●
VARYA TAPIZ	●	●	●
VARYA WOOD	●	●	●
VARYA XL	●	●	●
XAIL	●	●	-

INCLASS

METAL

SAMPLE CARD

CHROME



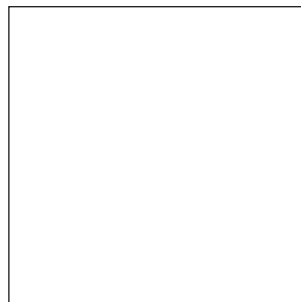
M1 COLOURS



B00



Aluminum



W01

COLORES M2



M56



V92



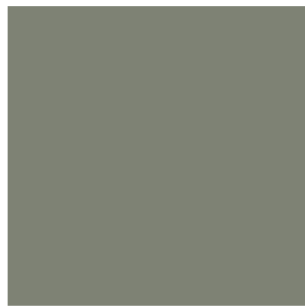
B40



B36



M38



V74



B44



G49



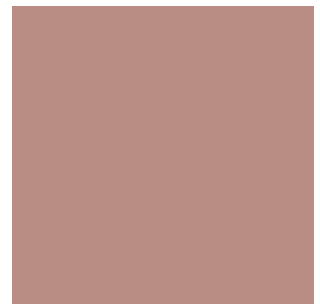
Y62



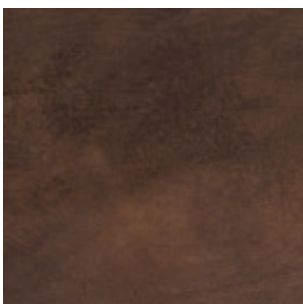
M44



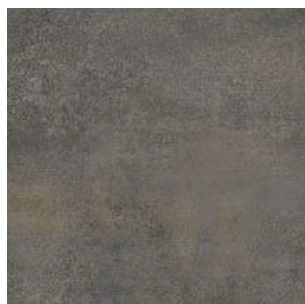
M82



P70



Rust Brown



Rust Grey



G42

INCLASS

WOOD

VENEER / PAINTED WOOD

VENEER / SOLID WOOD

Due to natural variations of the wood, finished products may vary from samples in colour, texture, and grain.

Wood parts may contain knots or grain patterns of different tones and are not homogeneous. This may lead to variations from one piece to another.

The wooden parts will darken and change tone with age and exposure to light.

All veneer and solid wood parts are finished with post-catalysed wood coatings, which provide exceptional durability and resistance.

PAINTED WOOD

All painted wood parts are finished with post-catalysed wood coatings with a process of three layers. This process provides exceptional durability and resistance.

BESPOKE WOOD FINISHES

Upon approval and with an upcharge, bespoke wood finishes are available. Contact our Customer Service for pricing and lead times.

Prior to approval, customer will send a sample for matching at least 6x6cm in surface dimension. Once received in our factory and approved, INCLASS will produce a matching sample following acknowledgement of the order. INCLASS will schedule the order for production only when the sample has been approved by the Customer.

Pantone® or RAL colour matches do not require approval and sample matching, but it may be requested by the Customers at a cost to be agreed with our Customer Service.

INCLASS may ask for payments in advance on bespoke finishes.



INCLASS

WOOD MATRIX BY COLLECTION

WOOD FINISHES
Beech
Oak
Walnut
W1 Colours
W2 Colours

LEGEND

- Not available
- Available
- See specifications

ALTEA	-	●	-	-	-
ANN	●	●	●	●	●
ARC	●	●	●	●	●
ARYN WOOD	-	●	-	-	-
BINAR 60	-	●	-	-	-
DUNAS XL	-	●	-	-	-
DUNAS XS	-	●	-	-	-
ESCALAS	-	●	●	-	-
LAPSE	-	●	-	-	-
LEA	-	●	●	-	-
LIN WOOD	-	●	-	-	-
NIIM	●	-	●	●	●
PAU	●	-	-	-	-
PLANIA BENCH	-	●	●	-	-
PLANIA TABLE	-	●	●	-	-
REVER	-	●	●	-	-
STIKS	●	-	●	●	●
SUN	●	●	●	●	●
TAIA	-	●	-	-	-
TAO	●	●	●	●	●
UNNIA	-	●	-	-	-
UNNIA TAPIZ	-	●	-	-	-
VARYA	-	●	-	-	-
VARYA TAPIZ	-	●	-	-	-
VARYA WOOD	-	●	○	-	-
VARYA XL	-	●	-	-	-
WUDI	-	●	-	-	-
XAIL	-	●	-	-	-

INCLASS

WOOD

VENEER / SOLID WOOD

BEECH



Natural Stain

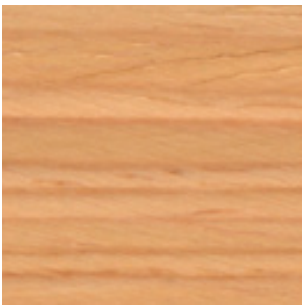


Walnut Stain

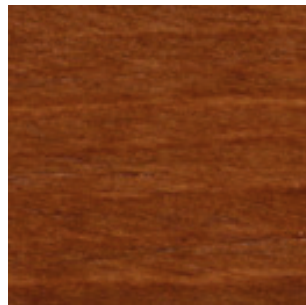


Wenge Stain

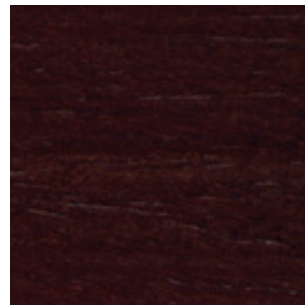
OAK



Natural Stain



Walnut Stain



Wenge Stain



Black Stain

WALNUT



Natural Stain

INCLASS

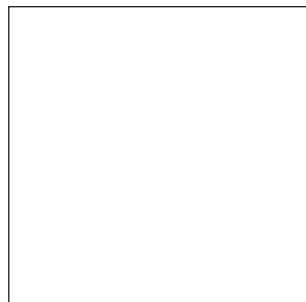
WOOD

LACQUERED COLOURS

W1 COLOURS

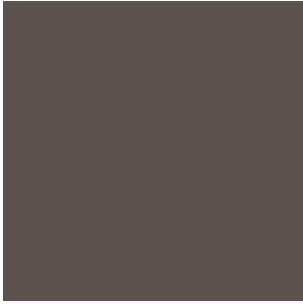


B00



W01

W2 COLOURS



M56



V92



B40



B36



M38



V74



B44



G49



Y62



M44



M82



G42



P70

INCLASS

POLYPROPYLENE

PP1 COLOURS



LEGEND

- Not available
- Available
- See specifications

LAN	-
LAPSE	-
LEA	●
LEX	-
LIN TAPIZ	-
LIN WOOD	-
MALIBU	-
MARCUS	-
MOON	-
NIIM	-
NUME	-
PAU	-
PLANIA BENCH	-
PLANIA TABLE	-
STELLA	-
STIKS	-
SUI	-
SUN	-
TAIA	●
TAO	-
TETRIS 2.0	-
UNNIA	●
UNNIA TAPIZ	-
VARYA	●
VARYA TAPIZ	-
VARYA WOOD	-
VARYA XL	●
WUDI	-
XAIL	-

INCLASS

POLYPROPYLENE

PP1 COLOURS FOR MONOSHELLS

900/901



B00



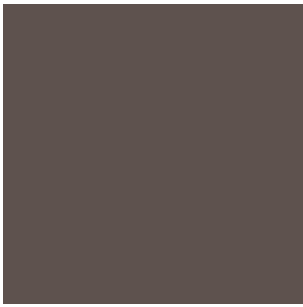
B40



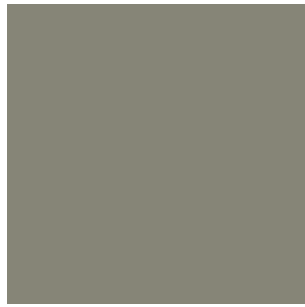
B36



B44



M56



V74



V16



G42



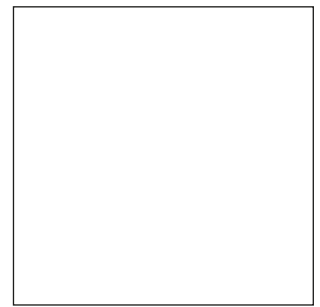
M38



Y62



P70



W01

ECOPLAS

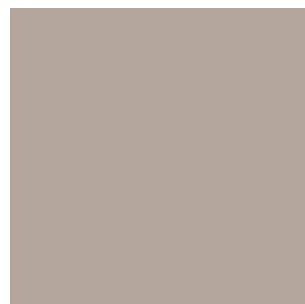
100% recycled polypropylene



V92



M44



M82



G49

POLYPROPYLENE - PP1 COLOURS

INCLASS

POLYPROPYLENE

PP1 COLOURS FOR BASES



B00



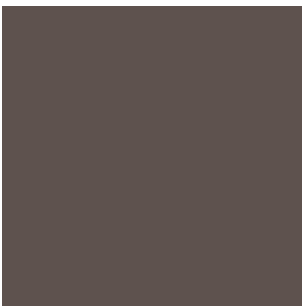
B40



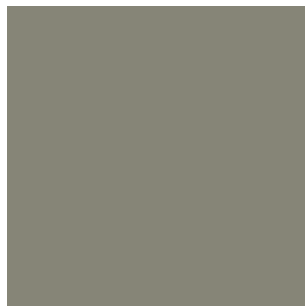
B36



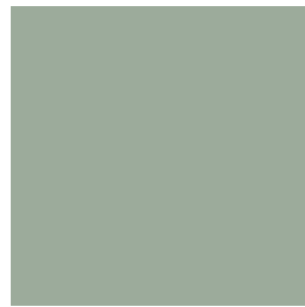
B44



M56



V74



V16



G42



M38



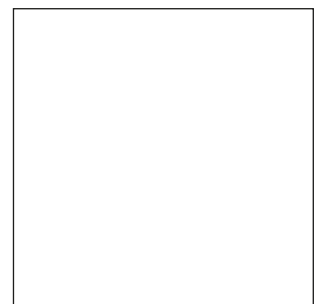
Y62



P70



M82



W01

INCLASS

ROTOMOLDED POLYETHYLENE

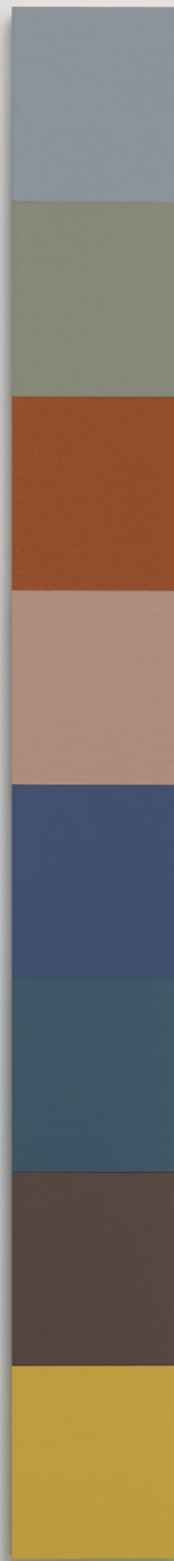
Rotomolded polyethylene items are suitable for indoor and outdoor use.

Composed polyethylene colours may present surface irregularities that are intrinsic to these type of finishes. INCLASS will not accept returns due to this

Painted polyethylene colours are available in matt or gloss finish.
Customer must specify.

Upon approval, the bases can also be painted with any of the RAL colours in matt or gloss finish. Contact Customer Service for lead time.

Upon approval other bespoke colours are also available. Contact our Customer Service for pricing and lead time.



INCLASS

ROTOMOLDED POLYETHYLENE

POLYETHYLENE COLOURS

PE1 STANDARD COLOURS



G49 Anthracite



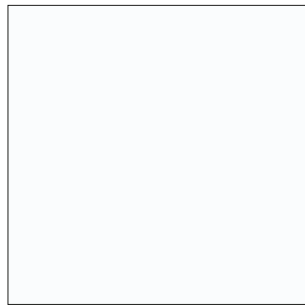
G42 Grey



M82 Stone



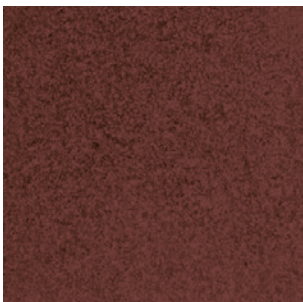
B00* Black



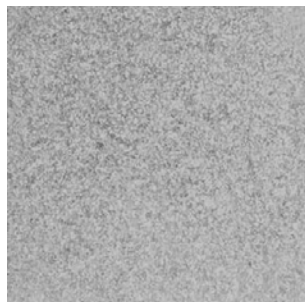
W01 White

*B00 black colour 100% recycled material

PE2 COMPOSED COLOURS



Rust Brown



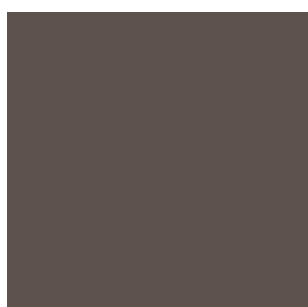
Concrete

INCLASS

ROTOMOLDED POLYETHYLENE

LACQUERED POLYETHYLENE COLOURS

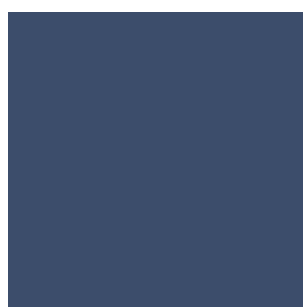
PE3 STANDARD PAINTED COLOURS



M56



B40



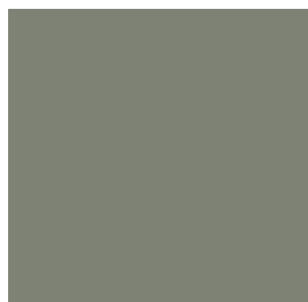
B36



B00



M38



V74



B44



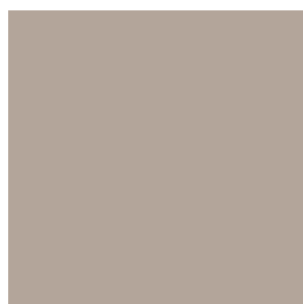
G49



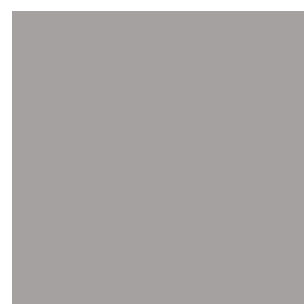
Y62



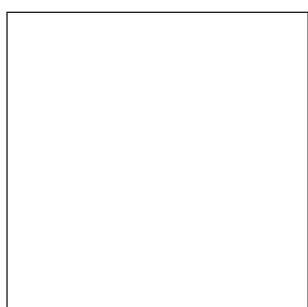
P70



M82



G42

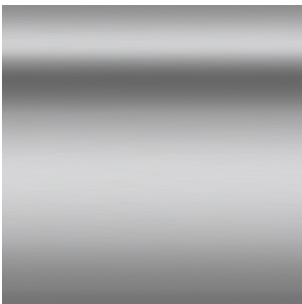


W01

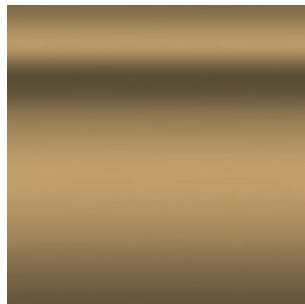
*100% recycled material

**Standard in matt finish. Optionally available in gloss finish.

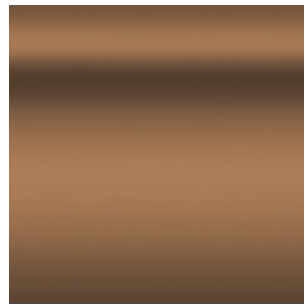
PE4 METALLIC PAINTED COLOURS



Silver



Gold



Copper

PE5 BESPOKE PAINTED COLOURS

OPTIONALLY they can be finished in all the colours of the RAL sample card, both in gloss and matt.

INCLASS

TABLE TOPS

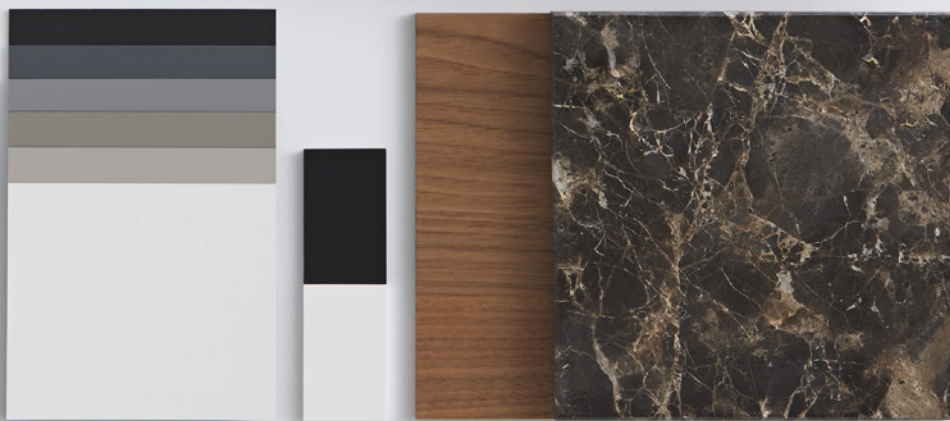
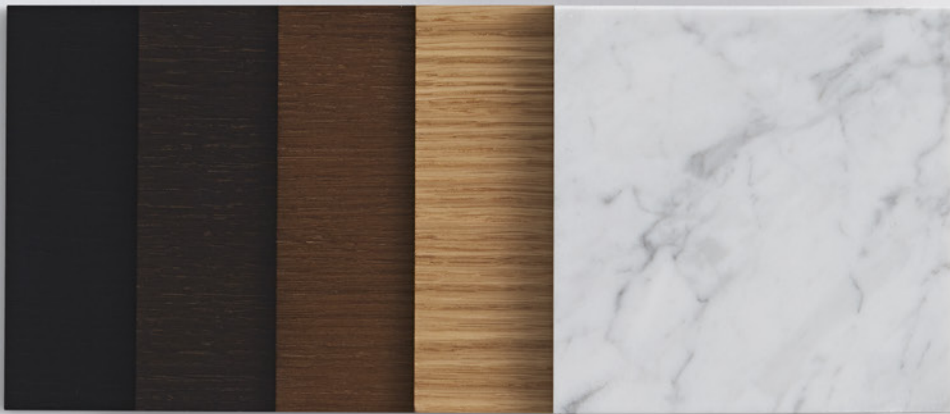


TABLE TOPS MATRIX BY COLLECTIONS

ANN	ARC
-----	-----

TABLE TOPS FINISHES		
Beech	•	-
Oak	•	•
Walnut	-	-
W1 colours	•	•
W2 colours	•	•
Solid Fenix®	-	•
Solid HPL, black core	-	•
Solid HPL, white core	-	•
Melamine	-	-

INCLASS

TABLE TOPS

WOOD VENEER

MDF core with natural wood surface.

BEECH



Natural Stain

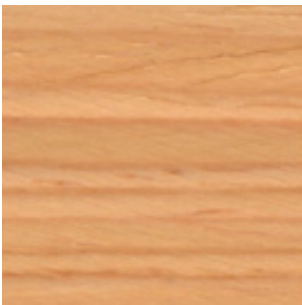


Walnut Stain

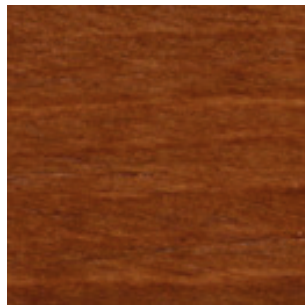


Wenge Stain

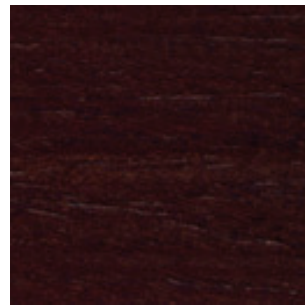
OAK



Natural Stain



Walnut Stain



Wenge Stain



Black Stain

WALNUT



Natural Stain

INCLASS

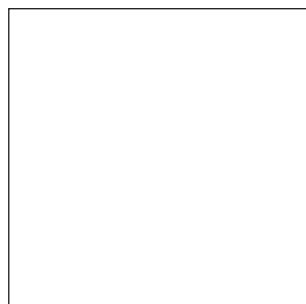
TABLE TOPS

LACQUERED MDF

W1 COLOURS



B00



W01

W2 COLOURS



M56



V92



B40



B36



M38



V74



B44



G49



Y62



M44



M82



G42



P70

INCLASS

TABLE TOPS

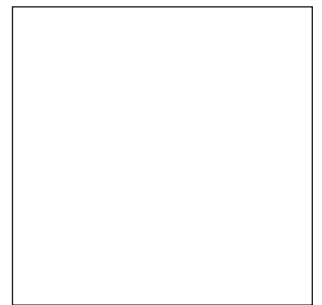
MISCELLANEOUS MATERIALS

SOLID FENIX®
12mm



Black

MELAMINE

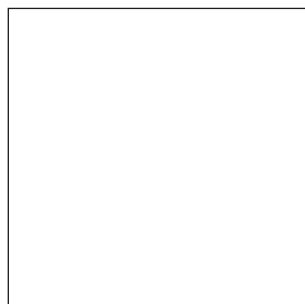


White

SOLID HPL
12mm black core

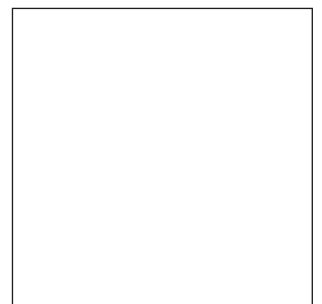


Black



White

SOLID HPL
12mm white core



White

3.

CARE AND MAINTENANCE

CARE AND MAINTENANCE

GLIDES

With continued use, the glides of the structures wear out. We recommend periodically checking its status. If they are worn, they must be replaced to avoid damage to the floor. INCLASS products fit standard plastic glides suitable for a wide variety of floor types. As an option, we offer the possibility of equipping your furniture with special glides for specific types of floors. If you have any questions, please ask our Customer Service department to find out the right type of glide suitable for your floor.

UPHOLSTERY FABRICS

INCLASS offers a broad range of upholstery materials produced by renowned manufacturers.

Please consult the technical data, maintenance and cleaning recommendations indicated by the manufacturers of each fabric in our finishes book.

* Important notice: INCLASS accepts no liability for users' stains or transfer of garment dyes to the furniture's fabric. This may occur especially with white or light coloured fabrics.

NATURAL LEATHER

We recommend cleaning with a soft sponge or cloth dampened with warm water and neutral soap. Do not soak it excessively. Dry thoroughly with a cloth once you have finished cleaning. INCLASS can supply specific products for cleaning the natural leather.

FAUX LEATHER

We recommend cleaning with a non-abrasive cloth or soft sponge dampened with warm water and neutral soap. Dry thoroughly with a cloth once you have finished cleaning. Avoid harsh detergents as they may cause hydrolysis and surface deterioration.

WOOD SURFACES

In the case of stains, we recommend cleaning the surface with a non-abrasive cloth, warm water and neutral soap. Once finished cleaning, we recommend that you dry the surface thoroughly.

Alternatively, you may use specific cleaning products for wood surfaces.

METALLIC STRUCTURES

In no case may abrasive sponges, fabrics or objects be used. Cleaning may be performed in the following ways:

Clean the surface with a non abrasive damp cloth and neutral soap. The surface should be dried after cleaning.

Clean the surface with a non abrasive cloth and a solution of 50% water and 50% alcohol.

Clean the surface with a non abrasive cloth and a specific cleaning product for metallic surfaces.

Limescale marks on Chrome may be removed by using a 30% vinegar and water solution or with specific cleaning products for chromed surfaces. Dry thoroughly with a dry non abrasive cloth when you have finished cleaning.

Strong, acidic or alkaline cleaners can damage painted metallic surfaces. It is very important to prevent this.

CASTERS

With the use, dust and debris may accumulate on your chair casters leading to premature loss of mobility and performance. A regular cleaning and maintenance are needed to prolong the right function of your chair casters.

PLASTICS

Plastic surfaces can be cleaned with a non-abrasive cloth, warm water and neutral soap. Alternatively, you may use a solution of 50% water and 50% alcohol or specific cleaning products for plastic surfaces.

MARBLE

Marble is a porous natural material, so it can be prone to staining and etching. With marble prevention and maintenance is very important.

For routine maintenance and cleaning you can wipe with a non-abrasive cloth, warm water and soap. Keep acids like lemon juice, vinegar or wine away from the surface. If they do spill, remove them as quickly as possible. Some stains, can be removed with a solution of 12% hydrogen peroxide and a few drops of ammonia.

For more information on the maintenance of these and other materials, please contact our Customer Service.

DISINFECTION

Due to the COVID 19 pandemic, many people wonder how to properly clean their furniture to prevent and avoid the transmission of the virus without damaging its surface materials. In order to inform you, INCLASS has published a disinfection guide with useful tips to disinfect the different surfaces of your furniture. You can consult our disinfection guide in the following [Link](#).